



HOPKINTON



Photo Credit: All Trails, Town of Hopkinton, Data USA, The Westerly Sun, Edible Rhody

Municipal Resilience Program Community Resilience Building Summary of Findings

May 2023



Town of Hopkinton, Rhode Island

Community Resilience Building

Summary of Findings

Overview

The need for municipalities, regional planning organizations, corporations, states, and federal agencies to increase resilience to extreme weather events and a changing climate is strikingly evident amongst the communities across the state of Rhode Island. Recent events such as Tropical Storm Irene, Super Storm Sandy, severe winter storms (2013 & 2015), and even the recent severe flooding during the summer of 2022 (i.e., I-95 closure) have reinforced this urgency and compelled leading communities like the Town of Hopkinton to proactively collaborate on planning and mitigating risks. Ultimately, this type of leadership is to be commended because it will reduce the vulnerability and reinforce the strengths of people, infrastructure, and ecosystems and serve as a model for other communities in Rhode Island, New England, and the nation.

In the winter of 2023, the Town of Hopkinton embarked on certification within the state of Rhode Island's Municipal Resilience Program (MRP). As a prerequisite to certification, the Rhode Island Infrastructure Bank (RIIB) and The Nature Conservancy (TNC) provided the Town with a community-driven process to assess current hazard and climate change impacts and to surface projects, plans, and policies for improved resilience. In May 2023, Hopkinton's Core Team helped organize their Community Resilience Building process and workshop facilitated by TNC in partnership with RIIB. The core directive of this effort was the engagement with and between community members to define strengths and vulnerabilities and the development of priority resilience actions for the Town of Hopkinton.

The Hopkinton Community Resilience Building Workshop's central objectives were to:

- Define top local, natural, and climate-related hazards of concern.
- Identify existing and future strengths and vulnerabilities.
- Identify and prioritize actions for the Town.
- Identify opportunities to collaboratively advance actions to increase resilience alongside residents and organizations from across the Town, and beyond.

The Town of Hopkinton employed an “anywhere at any scale”, community-driven process called Community Resilience Building (CRB) (www.CommunityResilienceBuilding.org). The CRB’s tools, reports, other relevant planning documents, and local maps were integrated into the workshop process to provide both decision-support and visualization around shared issues and existing priorities across Hopkinton. The Hopkinton Comprehensive Plan (2016) and the Hopkinton Hazard Mitigation Plan (2018) were particularly instructive as references. Using the CRB process - rich with information, experience, and dialogue - the participants produced the findings presented in this summary report. This includes an overview of the top hazards, current concerns and challenges, existing strengths, and proposed actions to improve Hopkinton’s resilience to hazards and climate change today, and in the future.

The summary of findings transcribed in this report, like any that concern the evolving nature of risk assessment and associated action, is proffered for comments, corrections and updates from workshop attendees and other stakeholders alike. The leadership displayed by the Town of Hopkinton on community resilience building will benefit from the continuous participation of all those concerned.

Summary of Findings

Top Hazards and Vulnerable Areas for the Community

Prior to the CRB Workshop, the Hopkinton Core Team identified the top hazards for the Town. The hazards of greatest concern included hurricanes and tropical storms, Nor’easter and blizzards, and high wind events. Additional hazards highlighted by participants during the CRB Workshop included riverine flooding and heat waves, particularly during the late summer months. These hazards have direct and increasing impacts on the infrastructure, environment, and residents of and visitors to Hopkinton. These effects are seen in residential homes, natural areas (wetlands, rivers, forests, preserves, parks), roads, bridges, dams, businesses, transportation, municipal facilities, recreational fields, historic building, churches, social support services, and other critical infrastructure and community assets within Hopkinton.

Current Concerns and Challenges Presented by Hazards

The Town of Hopkinton has several concerns and faces multiple challenges related to the impacts of natural hazards and climate change. In recent years, Hopkinton has experienced a series of highly disruptive and damaging weather events including severe flooding (March 2010), Tropical Storm Irene (August 2011), Superstorm Sandy (October 2012), Nor'easter Nemo (February 2013), and Blizzard Juno (January 2015), severe drought (2016), and significant blizzard (2022). Impacts from Irene and Sandy included coastal and widespread inland flooding along with tree damage and associated power outages. The winter storms Nemo and Juno dropped 2-3 feet of snow with 2-3 inches per hour of accumulation at their peak. The magnitude and intensity of these events and others across Rhode Island have increased awareness of natural hazards and climate change, while motivating communities such as Hopkinton to proactively improve their resilience.

As is predicted with climate change, the impacts of these severe weather events have been varied and diverse. In Hopkinton this has included riverine flooding of critical infrastructure, roads, bridges, and low-lying areas; localized flooding from stormwater runoff during intense storms and heavy precipitation events; and property damage and utility outages (lasting several days or more) from wind, snow, and ice. Longer periods of elevated heat, particularly in July and August, have raised concerns about vulnerable segments of the population, including elderly and disabled residents who are homebound, residents living in older housing stock without air conditioning, lower-income residents who may have difficulty with utility bills for temperature control in their homes, and the residents living near areas with increased potential for wildfires. The combination of these issues presents a challenge to preparedness and mitigation priorities and requires comprehensive, yet locally specific actions in Hopkinton.

The workshop participants were generally in agreement that Hopkinton is experiencing more intense and frequent storm events and heat waves. Additionally, there was a general concern about the increasing challenges of being prepared for the worst-case scenarios (e.g., major thunderstorms and hurricanes (Cat-3 or above)) particularly in the late summer and in the fall/winter months when more intense storms coincide with colder weather (i.e., Nor'easters, blizzards). The impact of the recent COVID-19 pandemic was raised by workshop participants as well.

Specific Categories of Concerns and Challenges

As in any community, Hopkinton is not uniformly vulnerable to hazards and climate change. Certain locations, assets, and populations have been and will be affected to a greater degree than others. Workshop participants identified the following items as their community's key areas of concern and challenges across several broad categories.

Roads & Road Networks, Bridges, & Dams:

- Recognized need for a comprehensive review of all roads, bridges, and culverts but not enough funds to conduct review and resulting identification of maintenance needs (“deferred maintenance default”).
- Road repairs and maintenance costs continue to escalate with more and more projects being funded with relatively large federal funding. Contractors have increased prices and resulting contract values due to high project demand.
- Growing concerns about integrity of Woody Hill Bridge, which is a state-owned and maintained bridge in Hopkinton.
- Majority of problematic infrastructure including several high hazard dams are owned by private parties or the State of Rhode Island, which makes it difficult to remediate in a timely fashion.
- Growing number of issues with privately-owned culverts being washed out due to being undersized relative to the magnitude of current precipitation events. Constructed in accord with 1970s storm design standards.
- Ongoing needs to safely reduce the impact of beaver dams on roadways commands a great deal of time of the Department of Public Works staff that could otherwise be directed to road and stormwater drainage maintenance.
- Vulnerability from “gridlock” on municipal roads due to accidents that close or impair travel on Interstate 95 with motorists looking for detours through Hopkinton.

Drinking Water Supply:

- Recent break in a water line shared with Richmond provided evidence that both communities have aging infrastructure that is reaching a failure point. Lack of financial resources to conduct assessment of water pipe condition.
- Majority of residents use private wells to supply drinking water which presents a concern during extended power outages because most households do not have back-up generators capable of running the wells.
- No source of clean potable water in Hopkinton.

Specific Categories of Concerns and Challenges (cont'd)

Emergency Management & Preparedness:

- Rapidly aging population of residents that have limited mobility and are increasingly isolated during and after disasters.
- Growing concerns about the severity of the recent droughts in Hopkinton.
- Dead trees and brush caused by drought and dry events present a high risk of wildfires as was evident in Exeter in April 2023 when several hundred acres were burned.
- Accessibility back and forth across the Wood-Pawcatuck River can be challenging during major flood events. However, there are many river and stream crossings to use as alternatives if one or more crossings are compromised by flood waters, but timely information about when and where road crossings are unsafe remains an issue.
- During major flood events, various areas in Hopkinton can become isolated from access and egress which can pose a concern if coupled with power outages for residents who have special needs and/or are elderly.
- Restoration of power after outages can take a very long time in Hopkinton due to the low population density, which are factors used in response by the utility (“prioritize power restoration to highest density populations first”).
- Crandall Field has ongoing issues from flooding with runoff from Route 3.
- Dow Field floods periodically due to proximity to Wood River.
- French Village is susceptible to flooding from the Wood River.

Municipal Functions, Operations, & Growth:

- Lack of county governance structure presents a challenge to multi-municipal planning and can increase preparedness expenses and resource needs.
- Aging workforce that results in attrition and replacement by less experienced staff that do not have the length of tenure and intimate knowledge of the community’s vulnerabilities.
- Challenges recruiting and securing new staff in rural communities like Hopkinton given the remote nature and the current job market that provides potential employees with many other options.
- Capital improvement budget on an annual basis is limited (approximately \$200K).
- Culture of self-reliance has prevented staff from asking for help from the state to fix/infrastructure problems.

Specific Categories of Concerns and Challenges (cont'd)

- Smaller tax base and less commercial industry as compared to similar-sized municipalities results in lower financial resources.
- Large geography with many small villages makes it challenging to disseminate resources equitably and effectively.
- Lack of understanding about whom to call within the municipality to register concerns and complaints about ongoing and emerging issues in Hopkinton.
- Growing challenges in school funding given the State's funding formula and also increasing numbers of students with special needs.
- Chariho Regional Schools are vulnerable to loss of power and need some capital upgrades to reduce that risk.
- Currently, no real viable plan on how to adequately share resources due to complexity of multiple jurisdictions and districts within the Chariho Regional School District footprint (i.e., 3 police chiefs, 6 fire chiefs, 3 town councils, 3 town managers).
- Ongoing challenges of ensuring communications are reaching older, more isolated residents in a timely and effective manner.

Watersheds, Wetlands, Rivers, Open Space, Forests, & Trees:

- Ongoing concerns about dead and standing trees along roadways and in proximity to buildings and structures.
- Land clearing activities for development are directly impacting natural areas. This could diminish ability to be resilient to the impacts of climate change, including localized and regional heat and flooding that are ameliorated by intact, contiguous forested lands.
- Spongy moth outbreaks over the last decade have weakened the forests in Hopkinton resulting in extensive tree mortality which presents a hazard to people and property as well as the overall health and integrity of the forests.
- Ongoing concerns about high hazard "dead and standing" trees on private property that pose a threat to roadways and motorists and are beyond the purview of the municipality to remove.
- Tree mortality has led to not only risk to the power grid but has also elevated the risk of wildfires across Hopkinton and the region's forests.

Current Strengths and Assets

Just as certain locations, facilities, and populations in Hopkinton stand out as particularly vulnerable to the effects of hazards and climate change, other features are notable assets for Hopkinton's resilience building. Workshop participants identified the following items as their community's key strengths and expressed interest in centering them as the core of future resilience-building actions.

- Clearly, the responsive and committed engagement exhibited by leadership, staff, and residents is a very appreciated strength within and across Hopkinton. Ongoing collaboration between municipal staff, committee/commission volunteers, business owners, land trusts, faith-based organizations, non-government organizations, adjoining municipalities, and various state-level organizations, among others, on priorities identified herein will help advance comprehensive, cost-effective, community resilience building actions.
- Small population size requires the community to work together to creatively solve issues such as tree trimming and power loss.
- Experienced municipal staff that have worked up through the ranks so have a deep understanding of how different departments work and collaborated on issues and projects across Hopkinton.
- Highly responsive leadership and Town Manager that are receptive to the ideas of staff and residents and at the same time respectful of past activities and decisions.
- Current leadership style has a reverence for the past but is positioning Hopkinton for the future by protecting drinking water aquifers and other critical natural assets.
- Great deal of community cohesion amongst residents in Hopkinton.
- Municipality can fulfill services for residents while keeping taxes to a minimum as compared to other similar sized municipalities in Rhode Island.
- Municipal staff has a track record of securing grants for infrastructure and park improvements.
- Department of Public Works crews do a very good job at conducting road repairs and maintenance, as well as snow removal with a limited annual budget.

Current Strengths and Assets (cont'd)

- Town leadership directed the spending of the American Recovery Protection Act funding towards improving services for the Hopkinton community including new equipment for the Department of Public Works and Police Department as well as updated emergency services.
- Great deal of shared interest in working with Richmond and Charlestown to help protect the regional community characteristics and natural beauty of this part of Rhode Island.
- Responsive and reliable communications from municipal leadership and staff to residents through emergency events as well as for various public services such as those provided via the Parks and Recreation Department, among other Departments.
- Emergency Management support and leadership during the COVID-19 pandemic was well coordinated and responsive to the needs of the community.
- In the process of installing new emergency management notification system that can geo-target messages to registered community members, which will greatly enhance the tailoring of alerts involving road closures and isolated weather events to those residents in proximity to localized hazards.
- Increased awareness amongst residents on issues and procedures due to broadcasting from the local radio station (WBLQ) and programming such as “Chariho Is Listening”.
- Presence of Code Red application allows residents to sign-up voluntarily to receive emergency notifications.
- Ocean Community Chamber helps to get information out via email quickly to its business owner members.
- Community is very supportive of proactively protecting current open space and securing additional areas to maintain the ecological integrity of Hopkinton, provide additional recreational opportunities for residents and tourists, and nature-based resilience, including flood storage and minimizing heat island effects on residents.
- Outstanding school system servicing three municipalities (i.e., Chariho Regional School District), which helps to attract families with school-aged children to Hopkinton.
- Chariho School does emergency management drills with all three of the municipalities serviced by the school involved to help foster cross-municipal coordination.

Current Strengths and Assets (cont'd)

- Chariho Middle School (in Richmond) is used as an emergency community center during crisis events (e.g., 2010 floods - center was activated).
- Aquifers for drinking water have been protected for current and future use by residents of Hopkinton.
- Extensive and well-connected preserve and trail system through diverse, natural, rural landscapes not often seen in Rhode Island and other parts of New England.
- Ongoing opportunities for Hopkinton to serve as a “Gateway” of “State Entrance” to Rhode Island for visitors from the eastern side of the state with Exit 1 off Interstate 95.
- Langworthy and Crandall Field are green spaces used extensively for family recreation.
- Ponds towards Hope Valley are used for ice fishing activities which helps to bring the community together during the winter months.
- Agreement by residents that recent technological changes such as town website and alert notification system were necessary and helping to improve the efficiency of some municipal operations (“shift to more progressive mindset around technology”).
- Large support for Hopkinton Historical Preservation by community members with an interest in bringing the Town’s past into the future alongside new changes.
- Great deal of commitment to volunteering on civic-focused boards, commissions, and groups by Hopkinton residents.
- Upcoming completion of an updated Natural Hazard Mitigation Plan for Hopkinton (completion expected by the end of June 2023).



Credit: Hopcity Cafe



Credit: The Day



Credit: TripAdvisor

Recommendations to Improve Resilience

A common theme among workshop participants was the need to continue community-based planning efforts focused on developing adaptive measures to reduce Hopkinton's vulnerability to extreme weather, climate change and other common concerns raised. To that end, the workshop participants helped to identify several priority topics requiring more immediate and/or ongoing attention including:

- **Long-term vision and growth** (i.e. responsible/sustainable growth, volunteerism, conservation & recreation, economic development, education, regionalism);
- **Infrastructure improvements** (i.e. road/bridge/dams, stormwater management systems, green stormwater infrastructure, drinking water supply, recreational fields);
- **Quality of life improvements** (i.e. parks and recreation, open space & access, sustainability, health & safety, economic prosperity);
- **Emergency management** (i.e. communications, outreach, education, continuation of services, evacuation, vulnerable populations, alert systems).

In direct response, the Community Resilience Building workshop participants developed the following actions and identified, but did not rank, them as priority or as additional actions. Mitigation actions from the Hopkinton Hazard Mitigation Plan Update (2018) are provided in Appendix A for cross reference with actions developed during the CRB workshop presented below. Maps provided during the CRB Workshop gathered from the Hopkinton Hazard Mitigation Plan Update and Comprehensive Community Plan (2016) are provided in Appendix B.

Priority Actions

Capacity Building

- Create a centralized location to gather during an emergency that has food, showers, and shelter within Hopkinton, rather than relying on more distant facilities in Charlestown and Quonset Air Base.
- Help to enable Department of Public Works shift from a reactionary approach to a proactive operating model via additional funding for studies, plans, and prioritized projects across Hopkinton.

Priority Actions (cont'd)

Capital Projects

- Elevate the perception of spending on infrastructure as a method to increase economic development that may cover expenses via increased tax base. Direct infrastructure spending on increasing broadband availability, extending the water line to reach a broader area and range of residents (beyond just Main Street and Hope Valley), and improve the roadways and bridges. Review study conducted for the Town that previously identified and prioritized infrastructure related projects.
- Identify and prioritize needed upgrades to bridges and culverts across Hopkinton to help increase transportation, resilience, and access/egress for residents and emergency responders.
- Explore options to reduce runoff from Route 3 using green stormwater infrastructure to Crandall Field and conduct implementation of project intervention(s).
- Implement geo-targeting emergency management alert system in Hopkinton.

Plans/Preparedness/Studies/Outreach

- Continue to encourage the state to incentivize multi-municipal, regional approaches to planning for and managing larger scale impacts of climate change and extreme weather (i.e., “regional resiliency districts”).
- Coordinate with surrounding municipalities to set up regular meetings with state of Rhode Island’s Department of Environmental Management to discuss procedures and approaches to help reduce current forest management issues as well as ways to avoid future mortality and ensure long-term forest health in Hopkinton and adjoining municipalities.
- Provide educational materials and training for residents on tree planting techniques, what to plant and where, tree trimming practices and general forest management approaches in accord with municipal staff (i.e., Tree Warden).

Priority Actions (cont'd)

- Explore, draft, and institute a land clearing ordinance that will help to maintain buffer areas and reduce the overall impacts to forest canopy cover from residential and commercial development.
- Work to improve communications with private property owners about high hazard trees that pose risks to residents and visitors.
- Improve communications with residents about the risk of wildfire during high fire hazard seasons. Consider improved signage about fire hazards and “no burn” rules on public lands. Work with Fire Department to help reduce fire loads and improve outreach about fire risk.
- Assess the effects of having Interstate 95 run through the municipality in terms of effects on roadways and demands on municipal services. Use findings as foundation for discussion with state Department of Transportation around covering extraordinary expenses.
- Increase tax generation by attracting and retaining commercial businesses in Hopkinton via a renewed focus on economic development and more impactful marketing of the Town.

Additional Actions

Capacity Building

- Examine Community Resilience Building Summary of Findings from neighboring municipalities in hopes of finding areas of common interest, shared value, and capacity availability to begin creating regional partnerships and networks to collaboratively tackle issues.
- Take meaningful steps as a municipality to prepare to address increased the social services challenges.

Capital Projects

- Provide clearer signage and access spots for natural areas in Hopkinton.
- Update municipal website and look for ways to increase outreach to residents to help increase awareness and encourage registration of residents for emergency alerts and other communication materials.

Plans/Preparedness/Studies/Outreach

- Conduct educational outreach to residents about the conservation and beneficial use of natural systems (i.e., green stormwater infrastructure, bioswales, wetlands, etc.) and the ways that they can improve water supply quality, increase onsite infiltration, and help reduce localized flooding.
- Identify examples from other regions at the county scale or other scales (i.e., Aquidneck Island, Rhode Island) that have worked to create and deliver on viable plans for sharing of resources that reduce cost and improve efficiency, including emergency management and child-related expenses. Look to leverage examples across the three-town area per the Chariho Regional School District service area.
- Seek out opportunities to reduce the threat of catastrophic failure of high hazard dams and other dams in Hopkinton including conducting outreach to private landowners and the state of Rhode Island.

Additional Actions (cont'd)

- Find approaches and resources to increase the support for mental health and increase social service needs amongst residents due to high stress and anxiety levels in kids and adults.
- Look to improve the Chariho Regional School Districts protocols for evacuation and emergency management with an emphasis on high wind events that can knock out power lines to the schools and other critical facilities.
- Require the use of less impervious surfaces and more green stormwater infrastructures in all new development, and where possible in any redevelopment activities.



Credit: Town of Hopkinton



Credit: Town of Hopkinton



Credit: Milford Daily News

CRB Workshop Participants: Department/Organization

Town of Hopkinton – Office of the Town Manager

Town of Hopkinton – Police Department

Town of Hopkinton – Office of the Town Clerk

Town of Hopkinton – Finance Department

Town of Hopkinton – Department of Public Works

Town of Hopkinton – Fire Department

Town of Hopkinton – Department of Information Technology and GIS

Town of Hopkinton – Planning Department

Town of Hopkinton – Building and Zoning Department

Town of Hopkinton – Office of the Public Welfare Director

Hopkinton Land Trust

Chariho Regional School District

Hopkinton Core Project Team

Brian Rosso – Town Manager – Town of Hopkinton

Michael Spellman – Planning Clerk – Town of Hopkinton

Leianne Spears – Town Manager Assistant – Town of Hopkinton

Talia Jalette – Town Planner – Town of Hopkinton

Online CRB Workshop Facilitation Team

Rhode Island Infrastructure Bank - Kim Koriioth (MRP Lead)

The Nature Conservancy - Adam Whelchel, Ph.D. (Lead Facilitator)

The Nature Conservancy – Sue AnderBois (Small Group Facilitator)

Small Group Facilitator – Kevin Essington

The Nature Conservancy - Kai Lo Muscio (MRP Coordinator/IT Manager/Scribe)

The Nature Conservancy – Catherine Campbell (Scribe)

The Nature Conservancy – Chris Gaynor (Scribe)

The Nature Conservancy – Rafeed Hussain (Scribe)

Recommended Citation

Town of Hopkinton Online Community Resilience Building Workshop - Summary of Findings Report. (2023). State of Rhode Island’s Municipal Resilience Program. The Nature Conservancy and Rhode Island Infrastructure Bank. Hopkinton, Rhode Island.

Acknowledgements

Special thanks to the Town leadership, staff, and community members for their willingness to embrace the process in hopes of a more resilient future for Hopkinton. This online Community Resilience Building Workshop was made possible in large part through the dedicated contribution of the facilitation team members who skillfully conducted the Hopkinton Community Resilience Building workshop in close partnership with the Town’s Core Project Team.

Appendix A

Town of Hopkinton Hazard Mitigation Plan Update (2018)

Mitigation Actions (Section 6)

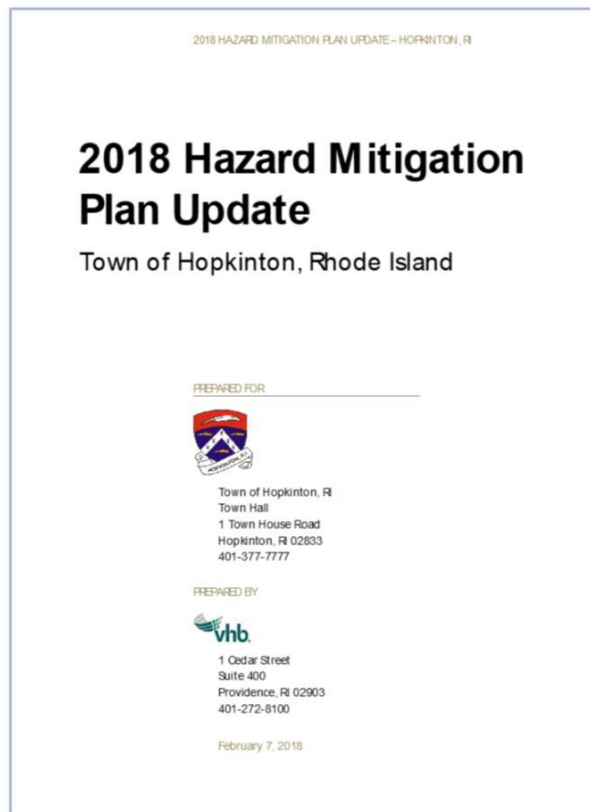


Table 23 VULNERABLE AREA: Flood Prone Drainage Systems

MITIGATION ACTION	MITIGATION TYPE	ALIGNMENT WITH PLAN GOALS		ACTION PRIORITY
1A- Rebuild catchbasin #3 at Locustville Road. Replace corrugated pipes with smooth ones. 1B- Action 1A may include 5 rows of infiltration chambers in between CB 1 and 2 on Locustville Rd.	<input type="checkbox"/> Local Plans and Regulations <input checked="" type="checkbox"/> Structure and Infrastructure <input type="checkbox"/> Natural Systems Protection <input type="checkbox"/> Education and Awareness	<input type="checkbox"/> 1 <input checked="" type="checkbox"/> 2 <input type="checkbox"/> 3 <input type="checkbox"/> 4	<input checked="" type="checkbox"/> 5 <input type="checkbox"/> 6	<input type="checkbox"/> High <input checked="" type="checkbox"/> Medium <input type="checkbox"/> Low ACTION STATUS New
RATIONALE- WHY IS THIS IMPORTANT?				
Flooding at Locustville Ave. during heavy rain events creates a public safety issue and impacts road infrastructure.				
BENEFITS		OBSTACLES		
Improve capacity of undersized drainage system built in the 1970s.				
LEAD/CHAMPION		SUPPORT		
Hopkinton DPW		Hopkinton Planning Department		
POTENTIAL FUNDING SOURCES		ESTIMATED COST	TIMELINE	
1A CDBG		1A \$30,000	<input checked="" type="checkbox"/> Short Term (0-3 years)	
1B RI Dept. of Environmental Management, CDBG		1B \$120,000	<input type="checkbox"/> Medium Term (3-5 years) <input type="checkbox"/> Long Term (more than 5 years)	
OTHER NOTES				
Engineering study being done as of July 2017. Through this planning process, numerous flood prone areas were identified by residents and committee members. During mitigation action discussions, the committee as able to confirm that most of the named areas were flooded in 2010 and subsequently repaired or improved.				

Table 24 VULNERABLE AREA: Bridges

MITIGATION ACTION	MITIGATION TYPE	ALIGNMENT WITH PLAN GOALS		ACTION PRIORITY
2A- <u>Inventory</u> all local culverts and bridges 2B- Hire an engineering consultant to <u>inspect</u> and assess the condition of all locally owned bridges and culverts	<input type="checkbox"/> Local Plans and Regulations <input checked="" type="checkbox"/> Structure and Infrastructure <input type="checkbox"/> Natural Systems Protection <input type="checkbox"/> Education and Awareness	<input type="checkbox"/> 1 <input checked="" type="checkbox"/> 2 <input type="checkbox"/> 3 <input type="checkbox"/> 4	<input checked="" type="checkbox"/> 5 <input type="checkbox"/> 6	<input checked="" type="checkbox"/> High <input type="checkbox"/> Medium <input type="checkbox"/> Low ACTION STATUS New
RATIONALE- WHY IS THIS IMPORTANT?				
The bridges in town are a mix of privately and publicly owned structures but their conditions are largely unknown. These bridges are used daily by residents and emergency personnel.				
BENEFITS		OBSTACLES		
Prioritize bridge repairs				
LEAD/CHAMPION		SUPPORT		
Hopkinton DPW		None.		
POTENTIAL FUNDING SOURCES		ESTIMATED COST	TIMELINE	
2A Town Capital Improvements budget		2A Staff time	<input checked="" type="checkbox"/> Short Term (0-3 years)	
2B RI Dept. of Environmental Management, CDBG		2B \$45,000	<input type="checkbox"/> Medium Term (3-5 years) <input type="checkbox"/> Long Term (more than 5 years)	
OTHER NOTES				
Cost to inspect and assess all structures will depend on how many are identified in the inventory.				

Table 25 VULNERABLE AREA: Bridges

MITIGATION ACTION	MITIGATION TYPE	ALIGNMENT WITH PLAN GOALS		ACTION PRIORITY
		2C- Prioritize bridge and culvert repairs 2D- Fix necessary bridges and culverts	<input type="checkbox"/> Local Plans and Regulations <input checked="" type="checkbox"/> Structure and Infrastructure <input type="checkbox"/> Natural Systems Protection <input type="checkbox"/> Education and Awareness	<input type="checkbox"/> 1 <input checked="" type="checkbox"/> 2 <input type="checkbox"/> 3 <input type="checkbox"/> 4
RATIONALE- WHY IS THIS IMPORTANT?				
The bridges in town are a mix of privately and publicly owned structures but their conditions are largely unknown. These bridges are used daily by residents and emergency personnel.				
BENEFITS		OBSTACLES		
Secure access for residents and first responders, improve road drainage and reduce flooding.				
LEAD/CHAMPION		SUPPORT		
Hopkinton DPW		None.		
POTENTIAL FUNDING SOURCES		ESTIMATED COST	TIMELINE	
2C Staff time		2C - \$1,000	<input type="checkbox"/> Short Term (0-3 years)	
2D RI Dept. of Transportation TIP funds		2D- Unknown	<input type="checkbox"/> Medium Term (3-5 years) <input checked="" type="checkbox"/> Long Term (more than 5 years)	
OTHER NOTES				

Table 26 VULNERABLE AREA: Bridges

MITIGATION ACTION	MITIGATION TYPE	ALIGNMENT WITH PLAN GOALS		ACTION PRIORITY
		3A- Hire an engineering consultant to assess feasibility of widening 1-lane bridges to 2-lane bridges	<input type="checkbox"/> Local Plans and Regulations <input checked="" type="checkbox"/> Structure and Infrastructure <input type="checkbox"/> Natural Systems Protection <input type="checkbox"/> Education and Awareness	<input type="checkbox"/> 1 <input type="checkbox"/> 2 <input type="checkbox"/> 3 <input type="checkbox"/> 4
RATIONALE- WHY IS THIS IMPORTANT?				
Narrow bridges hinder traffic flow, especially when the shoulders are snow-covered.				
BENEFITS		OBSTACLES		
Improve bridge safety especially during snow storms when already narrow bridges are difficult to pass.				
LEAD/CHAMPION		SUPPORT		
Hopkinton DPW		None.		
POTENTIAL FUNDING SOURCES		ESTIMATED COST	TIMELINE	
3A RI Dept. of Transportation TIP funds		3A - \$20,000	<input type="checkbox"/> Short Term (0-3 years) <input checked="" type="checkbox"/> Medium Term (3-5 years) <input type="checkbox"/> Long Term (more than 5 years)	
OTHER NOTES				

Table 27 VULNERABLE AREA: Bridges

MITIGATION ACTION	MITIGATION TYPE	ALIGNMENT WITH PLAN GOALS		ACTION PRIORITY
3B- Depending on outcome of Action 3A, widen select 1-lane bridges to 2-lanes as funds allow.	<input type="checkbox"/> Local Plans and Regulations <input checked="" type="checkbox"/> Structure and Infrastructure <input type="checkbox"/> Natural Systems Protection <input type="checkbox"/> Education and Awareness	<input type="checkbox"/> 1	<input checked="" type="checkbox"/> 5	<input type="checkbox"/> High
		<input type="checkbox"/> 2	<input type="checkbox"/> 6	<input checked="" type="checkbox"/> Medium
		<input type="checkbox"/> 3		<input type="checkbox"/> Low
		<input type="checkbox"/> 4		ACTION STATUS
				New
RATIONALE- WHY IS THIS IMPORTANT?				
Narrow bridges hinder traffic flow, especially when the shoulders are snow-covered.				
BENEFITS		OBSTACLES		
Improve bridge safety especially during snow storms when already narrow bridges are difficult to pass.				
LEAD/CHAMPION		SUPPORT		
Hopkinton DPW		None.		
POTENTIAL FUNDING SOURCES	ESTIMATED COST	TIMELINE		
3B RI Dept. of Transportation TIP funds	3B - Unknown	<input type="checkbox"/> Short Term (0-3 years) <input type="checkbox"/> Medium Term (3-5 years) <input checked="" type="checkbox"/> Long Term (more than 5 years)		
OTHER NOTES				

Table 28 VULNERABLE AREA: Bridges

MITIGATION ACTION	MITIGATION TYPE	ALIGNMENT WITH PLAN GOALS		ACTION PRIORITY
4- Replace and elevate the wooden Woody Hill and Woody Hill South bridges	<input type="checkbox"/> Local Plans and Regulations <input checked="" type="checkbox"/> Structure and Infrastructure <input type="checkbox"/> Natural Systems Protection <input type="checkbox"/> Education and Awareness	<input type="checkbox"/> 1	<input checked="" type="checkbox"/> 5	<input checked="" type="checkbox"/> High
		<input type="checkbox"/> 2	<input type="checkbox"/> 6	<input type="checkbox"/> Medium
		<input type="checkbox"/> 3		<input type="checkbox"/> Low
		<input type="checkbox"/> 4		ACTION STATUS
				New
RATIONALE- WHY IS THIS IMPORTANT?				
Narrow, old bridge prohibits fire vehicle access to the northern part of town, vehicles must go a longer route. Improvements will also benefit driver safety. Prioritized as #1 and #2 for the Town Transportation Improvement Program				
BENEFITS		OBSTACLES		
Improve bridge safety and usability by emergency vehicles				
LEAD/CHAMPION		SUPPORT		
Hopkinton DPW		None.		
POTENTIAL FUNDING SOURCES	ESTIMATED COST	TIMELINE		
RI Dept. of Transportation TIP funds	\$30,000	<input checked="" type="checkbox"/> Short Term (0-3 years) <input type="checkbox"/> Medium Term (3-5 years) <input type="checkbox"/> Long Term (more than 5 years)		
OTHER NOTES				

Table 29 VULNERABLE AREA: Water Supply Systems

MITIGATION ACTION	MITIGATION TYPE	ALIGNMENT WITH PLAN GOALS		ACTION PRIORITY
5- After feasibility assessment is completed (set to begin in 2017/18), extend public waterline from the Hope Valley Fire Station.*	<input type="checkbox"/> Local Plans and Regulations <input checked="" type="checkbox"/> Structure and Infrastructure <input type="checkbox"/> Natural Systems Protection <input type="checkbox"/> Education and Awareness	<input checked="" type="checkbox"/> 1	<input checked="" type="checkbox"/> 5	<input checked="" type="checkbox"/> High
		<input type="checkbox"/> 2	<input type="checkbox"/> 6	<input type="checkbox"/> Medium
				<input type="checkbox"/> Low
				ACTION STATUS
				New
RATIONALE- WHY IS THIS IMPORTANT?				
Much of the town water comes from wells or surface water. This limits the availability for residential use and firefighting efforts. However, there are public water lines near Hope Valley at the Richmond border.				
BENEFITS		OBSTACLES		
Provides more reliable water sources for residents, businesses, and firefighting efforts during droughts. Encourages economic growth for the Town. Supports clean water for public health.				
LEAD/CHAMPION		SUPPORT		
Hopkinton Planning Department		None.		
POTENTIAL FUNDING SOURCES	ESTIMATED COST	TIMELINE		
US Dept. of Agriculture	To be determined by feasibility study	<input type="checkbox"/> Short Term (0-3 years)		
FEMA Fire Prevention and Safety Grants		<input type="checkbox"/> Medium Term (3-5 years)		
CDBG		<input checked="" type="checkbox"/> Long Term (more than 5 years)		
OTHER NOTES				
*There has been concern that the extension of the waterline will increase the population and subsequently stress the septic systems which may lead to greater likelihood of land and water contamination. The State requires The Town to develop baseline data on current wastewater loadings in order to assure that no net increase in wastewater loadings to groundwater or surface water beyond the baseline will be allowed. This data collection needs to occur before the waterline is extended.				

Table 30 VULNERABLE AREA: Water Supply Systems

MITIGATION ACTION	MITIGATION TYPE	ALIGNMENT WITH PLAN GOALS		ACTION PRIORITY
6- Develop a plan for a major watermain break which could cause flooding and affect water supplies. Identify required shutoff equipment needed and whom to call.	<input checked="" type="checkbox"/> Local Plans and Regulations <input type="checkbox"/> Structure and Infrastructure <input type="checkbox"/> Natural Systems Protection <input type="checkbox"/> Education and Awareness	<input checked="" type="checkbox"/> 1	<input checked="" type="checkbox"/> 5	<input checked="" type="checkbox"/> High
		<input checked="" type="checkbox"/> 2	<input type="checkbox"/> 6	<input type="checkbox"/> Medium
				<input type="checkbox"/> Low
				ACTION STATUS
				New
RATIONALE- WHY IS THIS IMPORTANT?				
In the event of an emergency, there is currently no response plan or understanding of the coordinated effort that would be required.				
BENEFITS		OBSTACLES		
Public safety, reduce potential flooding damages to nearby infrastructure				
LEAD/CHAMPION		SUPPORT		
Hopkinton Planning Department		Hope Valley Fire Department		
POTENTIAL FUNDING SOURCES	ESTIMATED COST	TIMELINE		
Town Capital Improvement budget	\$2,500	<input type="checkbox"/> Short Term (0-3 years)		
		<input type="checkbox"/> Medium Term (3-5 years)		
		<input checked="" type="checkbox"/> Long Term (more than 5 years)		
OTHER NOTES				

Table 33 VULNERABLE AREA: Critical Municipal Hazard Response Facilities

MITIGATION ACTION	MITIGATION TYPE	ALIGNMENT WITH PLAN GOALS		ACTION PRIORITY
		<p>9 - Require all new critical facilities to be built 1 foot above the 500-year base flood elevation.</p>	<input checked="" type="checkbox"/> Local Plans and Regulations <input type="checkbox"/> Structure and Infrastructure <input type="checkbox"/> Natural Systems Protection <input type="checkbox"/> Education and Awareness	<input type="checkbox"/> 1 <input type="checkbox"/> 2 <input type="checkbox"/> 3 <input type="checkbox"/> 4
RATIONALE- WHY IS THIS IMPORTANT?				
Some current facilities are located in the Special Flood Hazard Area. This action aims to protect future development from the flood risk.				
BENEFITS		OBSTACLES		
Protect response ability of emergency personnel, promote flood-resilient structures.				
LEAD/CHAMPION		SUPPORT		
Building and Zoning Departments				
POTENTIAL FUNDING SOURCES	ESTIMATED COST	TIMELINE		
Staff time	none	<input type="checkbox"/> Short Term (0-3 years) <input type="checkbox"/> Medium Term (3-5 years) <input checked="" type="checkbox"/> Long Term (more than 5 years)		
OTHER NOTES				

Table 32 VULNERABLE AREA: Dams

MITIGATION ACTION	MITIGATION TYPE	ALIGNMENT WITH PLAN GOALS		ACTION PRIORITY
		<p>8- Consider the following recommendations from the Wood-Pawcatuck Watershed Flood Resiliency Management Plan. The Town still needs to evaluate what is best for residents.</p> <ul style="list-style-type: none"> Formalizing partial breach at Blue Pond Dam Replace culvert w larger structure and lower invert to drain impoundment and decommission Hoxie Farm Pond Dam. Maintain Locustville Pond Dam Repair Harris Pond Dam Construct fish passage at Barberville Pond Dam to promote connectivity Repair Wyoming Pond Upper Dam 	<input checked="" type="checkbox"/> Local Plans and Regulations <input type="checkbox"/> Structure and Infrastructure <input type="checkbox"/> Natural Systems Protection <input type="checkbox"/> Education and Awareness	<input type="checkbox"/> 1 <input type="checkbox"/> 2 <input type="checkbox"/> 3 <input checked="" type="checkbox"/> 4
RATIONALE- WHY IS THIS IMPORTANT?				
Being able to notify residents if an evacuation is necessary and where to go will improve public safety.				
BENEFITS		OBSTACLES		
Public safety		No obstacles to evaluate the recommendations. Future obstacle may be determining ownership of some dams.		
LEAD/CHAMPION		SUPPORT		
Town Council		Planning Department, EMA, Fire Departments		
POTENTIAL FUNDING SOURCES	ESTIMATED COST	TIMELINE		
Staff time	none	<input checked="" type="checkbox"/> Short Term (0-3 years) <input type="checkbox"/> Medium Term (3-5 years) <input type="checkbox"/> Long Term (more than 5 years)		
OTHER NOTES				
The 2017 Wood-Pawcatuck Watershed Flood Resiliency Management Plan provides recommendations to protect the flood resiliency of communities in the 300-acre Wood-Pawcatuck watershed and improve river and stream ecosystems, including water quality and habitat. The Hopkinton decision-makers have yet to decide how the recommendations in the plan further the community's goals.				

Table 31 VULNERABLE AREA: Dams

MITIGATION ACTION	MITIGATION TYPE	ALIGNMENT WITH PLAN GOALS		ACTION PRIORITY
7- Create a public notice/communication plan for emergency evacuation of dams (or other life-threatening hazards).	<input checked="" type="checkbox"/> Local Plans and Regulations <input type="checkbox"/> Structure and Infrastructure <input type="checkbox"/> Natural Systems Protection <input type="checkbox"/> Education and Awareness	<input type="checkbox"/> 1	<input type="checkbox"/> 5	<input checked="" type="checkbox"/> High
		<input type="checkbox"/> 2	<input type="checkbox"/> 6	<input type="checkbox"/> Medium
				<input type="checkbox"/> Low
				ACTION STATUS
				New
RATIONALE- WHY IS THIS IMPORTANT?				
Being able to notify residents if an evacuation is necessary and where to go will improve public safety.				
BENEFITS		OBSTACLES		
Public safety				
LEAD/CHAMPION		SUPPORT		
Hopkinton Emergency Management Agency (EMA)		Police and Fire Departments		
POTENTIAL FUNDING SOURCES		ESTIMATED COST	TIMELINE	
Town Capital Improvement budget		\$2,500	<input checked="" type="checkbox"/> Short Term (0-3 years) <input type="checkbox"/> Medium Term (3-5 years) <input type="checkbox"/> Long Term (more than 5 years)	
OTHER NOTES				
There are 40 dams in Hopkinton. As of September 2017, the Town was awaiting approval on dam emergency action plans.				

Table 34 VULNERABLE AREA: Critical Municipal Hazard Response Facilities

MITIGATION ACTION	MITIGATION TYPE	ALIGNMENT WITH PLAN GOALS		ACTION PRIORITY
10A- Stabilize the riverbank behind the Hope Valley Fire department building for short term structure protection.	<input type="checkbox"/> Local Plans and Regulations <input checked="" type="checkbox"/> Structure and Infrastructure <input type="checkbox"/> Natural Systems Protection <input type="checkbox"/> Education and Awareness	<input type="checkbox"/> 1	<input checked="" type="checkbox"/> 5	<input type="checkbox"/> High
		<input type="checkbox"/> 2	<input type="checkbox"/> 6	<input checked="" type="checkbox"/> Medium
				<input type="checkbox"/> Low
				ACTION STATUS
				New
RATIONALE- WHY IS THIS IMPORTANT?				
During heavy rain events, the high water levels of Brushy Brook erode the banks upon which the Hope Valley Fire District station is built. The station has experienced flooding.				
BENEFITS		OBSTACLES		
Reduces erosion and flooding behind the fire department. Temporary protection while looking for a place to relocate to.				
LEAD/CHAMPION		SUPPORT		
Building and Zoning Departments		RI Department of Environmental Management		
POTENTIAL FUNDING SOURCES		ESTIMATED COST	TIMELINE	
RIDEM Riparian Buffer Grant		Unknown	<input type="checkbox"/> Short Term (0-3 years) <input type="checkbox"/> Medium Term (3-5 years) <input checked="" type="checkbox"/> Long Term (more than 5 years)	
USDA Dept. of Agriculture, Rural Emergency Response Initiative				
U.S. Dept. of Homeland Security, Assistance to Firefighters Grants				
U.S. Dept. of Homeland Security, Pre-Disaster Mitigation Grant Program				
OTHER NOTES				

Table 35 VULNERABLE AREA: Critical Municipal Hazard Response Facilities

MITIGATION ACTION	MITIGATION TYPE	ALIGNMENT WITH PLAN GOALS		ACTION PRIORITY
10B- Relocate Hope Valley Fire Department out of the floodplain	<input type="checkbox"/> Local Plans and Regulations <input checked="" type="checkbox"/> Structure and Infrastructure <input type="checkbox"/> Natural Systems Protection <input type="checkbox"/> Education and Awareness	<input type="checkbox"/> 1	<input checked="" type="checkbox"/> 5	<input type="checkbox"/> High
		<input type="checkbox"/> 2	<input type="checkbox"/> 6	<input type="checkbox"/> Medium
		<input type="checkbox"/> 3		<input checked="" type="checkbox"/> Low
		<input type="checkbox"/> 4		ACTION STATUS
				New
RATIONALE- WHY IS THIS IMPORTANT?				
During heavy rain events, the high water levels of Brushy Brook erode the banks upon which the Hope Valley Fire District station is built. The station has experienced flooding.				
BENEFITS		OBSTACLES		
Permanent protection from flooding.				
LEAD/CHAMPION		SUPPORT		
Building and Zoning Departments		RI Department of Environmental Management		
POTENTIAL FUNDING SOURCES		ESTIMATED COST	TIMELINE	
US Dept. of Agriculture		Unknown	<input type="checkbox"/> Short Term (0-3 years)	
FEMA Fire Prevention and Safety Grants			<input checked="" type="checkbox"/> Medium Term (3-5 years)	
			<input type="checkbox"/> Long Term (more than 5 years)	
OTHER NOTES				

Table 36 VULNERABLE AREA: Critical Municipal Hazard Response Facilities

MITIGATION ACTION	MITIGATION TYPE	ALIGNMENT WITH PLAN GOALS		ACTION PRIORITY
11- Install lightning protection systems on Town and fire district buildings	<input type="checkbox"/> Local Plans and Regulations <input checked="" type="checkbox"/> Structure and Infrastructure <input type="checkbox"/> Natural Systems Protection <input type="checkbox"/> Education and Awareness	<input type="checkbox"/> 1	<input checked="" type="checkbox"/> 5	<input type="checkbox"/> High
		<input type="checkbox"/> 2	<input type="checkbox"/> 6	<input type="checkbox"/> Medium
		<input type="checkbox"/> 3		<input checked="" type="checkbox"/> Low
		<input type="checkbox"/> 4		ACTION STATUS
				New
RATIONALE- WHY IS THIS IMPORTANT?				
Lightning strikes are probable may cut out power for an extended period of time to Town facilities.				
BENEFITS		OBSTACLES		
Reduce damage and power outages from lightning strikes.				
LEAD/CHAMPION		SUPPORT		
Hopkinton EMA				
POTENTIAL FUNDING SOURCES		ESTIMATED COST	TIMELINE	
FEMA Fire Prevention and Safety Grants		\$1,511 each	<input type="checkbox"/> Short Term (0-3 years)	
			<input checked="" type="checkbox"/> Medium Term (3-5 years)	
			<input type="checkbox"/> Long Term (more than 5 years)	
OTHER NOTES				
Lightning Protection System: A complete system of strike termination devices, conductors (which could include conductive structural members), grounding electrodes, interconnecting conductors, surge protective devices, and other connectors and fittings required to complete the system. http://www.fireengineering.com/articles/2013/04/construction-concerns-for-firefighters--lightning-protection.html https://howmuch.net/costs/electric-lightning-rod-install				

Table 37 VULNERABLE AREA: Critical Municipal Hazard Response Facilities

MITIGATION ACTION	MITIGATION TYPE	ALIGNMENT WITH PLAN GOALS		ACTION PRIORITY
12A- Prioritize Department of Public Works structure resiliency	<input checked="" type="checkbox"/> Local Plans and Regulations <input type="checkbox"/> Structure and Infrastructure <input type="checkbox"/> Natural Systems Protection <input type="checkbox"/> Education and Awareness	<input type="checkbox"/> 1	<input checked="" type="checkbox"/> 5	<input type="checkbox"/> High
		<input type="checkbox"/> 2	<input type="checkbox"/> 6	<input type="checkbox"/> Medium
		<input type="checkbox"/> 3		<input checked="" type="checkbox"/> Low
		<input type="checkbox"/> 4		ACTION STATUS
				New
RATIONALE- WHY IS THIS IMPORTANT?				
The DPW facilities are outdated and in need of numerous repairs. In the past, the garage has been used as a voting location for area residents.				
BENEFITS		OBSTACLES		
Improve the ability for the DPW building and garage to remain operational so staff can appropriately do their jobs safely.				
LEAD/CHAMPION		SUPPORT		
Hopkinton DPW		Planning Department		
POTENTIAL FUNDING SOURCES		ESTIMATED COST	TIMELINE	
DPW budget for staff		Staff times	<input checked="" type="checkbox"/> Short Term (0-3 years) <input type="checkbox"/> Medium Term (3-5 years) <input type="checkbox"/> Long Term (more than 5 years)	
OTHER NOTES				

Table 38 VULNERABLE AREA: Critical Municipal Hazard Response Facilities

MITIGATION ACTION	MITIGATION TYPE	ALIGNMENT WITH PLAN GOALS		ACTION PRIORITY
12B- Implement upgrades to Department of Public Works facilities- dependent on Action 12A.	<input type="checkbox"/> Local Plans and Regulations <input checked="" type="checkbox"/> Structure and Infrastructure <input type="checkbox"/> Natural Systems Protection <input type="checkbox"/> Education and Awareness	<input type="checkbox"/> 1	<input checked="" type="checkbox"/> 5	<input type="checkbox"/> High
		<input type="checkbox"/> 2	<input type="checkbox"/> 6	<input type="checkbox"/> Medium
		<input type="checkbox"/> 3		<input checked="" type="checkbox"/> Low
		<input type="checkbox"/> 4		ACTION STATUS
				New
RATIONALE- WHY IS THIS IMPORTANT?				
The DPW facilities are outdated and in need of numerous repairs. In the past, the garage has been used as a voting location for area residents.				
BENEFITS		OBSTACLES		
Improve the ability for the DPW building and garage to remain operational so staff can appropriately do their jobs safely.				
LEAD/CHAMPION		SUPPORT		
Hopkinton DPW		Planning Department		
POTENTIAL FUNDING SOURCES		ESTIMATED COST	TIMELINE	
Hopkinton Capital Improvement Funds		Unknown	<input type="checkbox"/> Short Term (0-3 years) <input checked="" type="checkbox"/> Medium Term (3-5 years) <input type="checkbox"/> Long Term (more than 5 years)	
OTHER NOTES				

Table 39 VULNERABLE AREA: Populations

MITIGATION ACTION	MITIGATION TYPE	ALIGNMENT WITH PLAN GOALS		ACTION PRIORITY
13- Create public outreach bulletins on advising all residents on how to prevent wildfires, conserve water, safety during extreme temperatures, and smart flood mitigation suggestions.	<input type="checkbox"/> Local Plans and Regulations <input type="checkbox"/> Structure and Infrastructure <input type="checkbox"/> Natural Systems Protection <input checked="" type="checkbox"/> Education and Awareness	<input type="checkbox"/> 1	<input type="checkbox"/> 5	<input checked="" type="checkbox"/> High
		<input type="checkbox"/> 2	<input type="checkbox"/> 6	<input type="checkbox"/> Medium
		<input checked="" type="checkbox"/> 3		<input type="checkbox"/> Low
		<input checked="" type="checkbox"/> 4		ACTION STATUS Enhanced from 2012 Action
RATIONALE- WHY IS THIS IMPORTANT?				
Part of the Hopkinton general population is living in group homes, public housing, or are part of the seasonal resident communities.				
BENEFITS		OBSTACLES		
More informed residents make better choices to prevent risk to their property and the Town. Encourages a paradigm shift, allowing residents take ownership of their own mitigation measures.				
LEAD/CHAMPION		SUPPORT		
Hopkinton Police Department		Hopkinton EMA		
POTENTIAL FUNDING SOURCES	ESTIMATED COST	TIMELINE		
Town budget	\$2,000	<input type="checkbox"/> Short Term (0-3 years)		
U.S. Dept. of Homeland Security, Pre-Disaster Mitigation Program		<input checked="" type="checkbox"/> Medium Term (3-5 years)		
NOAA Education and Environmental Literacy Grants		<input type="checkbox"/> Long Term (more than 5 years)		
OTHER NOTES				
Use the following for guidance:				
https://smokeybear.com/en/prevention-how-tos				
https://www.epa.gov/watersense/start-saving				
http://www.riema.ri.gov/resources/citizens/prepare/threats/documents/Heat%20Safety.pdf				
http://www.riema.ri.gov/resources/citizens/prepare/threats/winterweather/Winter%20Weather%20Preparedness.pdf				
http://www.riema.ri.gov/resources/citizens/prepare/threats/flooding/Flood%20Safety.pdf				

Table 40 VULNERABLE AREA: Populations

MITIGATION ACTION	MITIGATION TYPE	ALIGNMENT WITH PLAN GOALS		ACTION PRIORITY
14- Create an evacuation plan for a hazardous release event along Interstate 95.	<input checked="" type="checkbox"/> Local Plans and Regulations <input type="checkbox"/> Structure and Infrastructure <input type="checkbox"/> Natural Systems Protection <input type="checkbox"/> Education and Awareness	<input checked="" type="checkbox"/> 1	<input checked="" type="checkbox"/> 5	<input checked="" type="checkbox"/> High
		<input checked="" type="checkbox"/> 2	<input type="checkbox"/> 6	<input type="checkbox"/> Medium
		<input checked="" type="checkbox"/> 3		<input type="checkbox"/> Low
		<input checked="" type="checkbox"/> 4		ACTION STATUS
				New
RATIONALE- WHY IS THIS IMPORTANT?				
Safety of all residents during a hazardous release event.				
BENEFITS		OBSTACLES		
Public safety		RI Dept. of Transportation plan may delay local efforts.		
LEAD/CHAMPION		SUPPORT		
Hopkinton EMA		RIDOT, DPW, State EMA, State and Local Police		
POTENTIAL FUNDING SOURCES		ESTIMATED COST	TIMELINE	
Town budget		Unknown	<input checked="" type="checkbox"/> Short Term (0-3 years)	
FEMA Pre-Disaster Mitigation grant			<input type="checkbox"/> Medium Term (3-5 years)	
			<input type="checkbox"/> Long Term (more than 5 years)	
OTHER NOTES				

Table 41 VULNERABLE AREA: Populations

MITIGATION ACTION	MITIGATION TYPE	ALIGNMENT WITH PLAN GOALS		ACTION PRIORITY
15- Revise current burn ordinance to prohibit ANY open burning year round without a permit.	<input checked="" type="checkbox"/> Local Plans and Regulations <input type="checkbox"/> Structure and Infrastructure <input type="checkbox"/> Natural Systems Protection <input type="checkbox"/> Education and Awareness	<input checked="" type="checkbox"/> 1	<input checked="" type="checkbox"/> 5	<input checked="" type="checkbox"/> High
		<input checked="" type="checkbox"/> 2	<input type="checkbox"/> 6	<input type="checkbox"/> Medium
		<input checked="" type="checkbox"/> 3		<input type="checkbox"/> Low
		<input checked="" type="checkbox"/> 4		ACTION STATUS
				From 2012
RATIONALE- WHY IS THIS IMPORTANT?				
Most residents know that you need a local permit to burn during certain months. This calendar differs from DEM who enforces it. A blanket rule of no open burning without a permit is easiest.				
BENEFITS		OBSTACLES		
Public safety		May be some initial confusion or pushback from residents. Enforcement may be difficult- requires additional man hours.		
LEAD/CHAMPION		SUPPORT		
Fire Departments		RI Dept. of Environmental Management		
POTENTIAL FUNDING SOURCES		ESTIMATED COST	TIMELINE	
Town budget		Staff time	<input checked="" type="checkbox"/> Short Term (0-3 years)	
			<input type="checkbox"/> Medium Term (3-5 years)	
			<input type="checkbox"/> Long Term (more than 5 years)	
OTHER NOTES				

Table 42 VULNERABLE AREA: Populations

MITIGATION ACTION	MITIGATION TYPE	ALIGNMENT WITH PLAN GOALS		ACTION PRIORITY
16- Planning Department to purchase latest version of ArcGIS Desktop 10.5.1	<input type="checkbox"/> Local Plans and Regulations <input type="checkbox"/> Structure and Infrastructure <input type="checkbox"/> Natural Systems Protection <input checked="" type="checkbox"/> Education and Awareness	<input checked="" type="checkbox"/> 1	<input checked="" type="checkbox"/> 5	<input checked="" type="checkbox"/> High
		<input checked="" type="checkbox"/> 2	<input type="checkbox"/> 6	<input type="checkbox"/> Medium
		<input checked="" type="checkbox"/> 3		<input type="checkbox"/> Low
		<input checked="" type="checkbox"/> 4		ACTION STATUS
				New
RATIONALE- WHY IS THIS IMPORTANT?				
In order for the town to continue using GIS we need to have support from ESRI, however to gain support we need to get the latest version of ArcGIS Desktop. This tool is applied widely through many planning projects.				
BENEFITS		OBSTACLES		
Smarter development		None anticipated.		
LEAD/CHAMPION		SUPPORT		
IT Department		Planning Department		
POTENTIAL FUNDING SOURCES		ESTIMATED COST	TIMELINE	
Town budget		\$8,000-\$16,000	<input checked="" type="checkbox"/> Short Term (0-3 years) <input type="checkbox"/> Medium Term (3-5 years) <input type="checkbox"/> Long Term (more than 5 years)	
OTHER NOTES				

Table 43 VULNERABLE AREA: Businesses

MITIGATION ACTION	MITIGATION TYPE	ALIGNMENT WITH PLAN GOALS		ACTION PRIORITY
17- Direct mail to businesses in the floodplain about dry floodproofing non-residential structures (strengthening walls, sealing openings, using waterproof compounds or plastic sheeting on walls to keep water out).	<input type="checkbox"/> Local Plans and Regulations <input type="checkbox"/> Structure and Infrastructure <input type="checkbox"/> Natural Systems Protection <input checked="" type="checkbox"/> Education and Awareness	<input type="checkbox"/> 1	<input type="checkbox"/> 5	<input checked="" type="checkbox"/> High
		<input type="checkbox"/> 2	<input type="checkbox"/> 6	<input type="checkbox"/> Medium
		<input type="checkbox"/> 3	<input type="checkbox"/> 7	<input type="checkbox"/> Low
		<input checked="" type="checkbox"/> 4		ACTION STATUS
				New
RATIONALE- WHY IS THIS IMPORTANT?				
Property owners may think the federal government will bail them out if there are flood damages. By using appropriate mitigation measures, they may lessen their damages in the first place.				
BENEFITS		OBSTACLES		
Reduce flood damage				
LEAD/CHAMPION		SUPPORT		
Police Department		Hopkinton EMA		
POTENTIAL FUNDING SOURCES		ESTIMATED COST	TIMELINE	
Town budget		\$2,000	<input checked="" type="checkbox"/> Short Term (0-3 years) <input type="checkbox"/> Medium Term (3-5 years) <input type="checkbox"/> Long Term (more than 5 years)	
FEMA Pre-Disaster Mitigation grant				
OTHER NOTES				

Table 44 VULNERABLE AREA: Schools

MITIGATION ACTION	MITIGATION TYPE	ALIGNMENT WITH PLAN GOALS		ACTION PRIORITY
		<input type="checkbox"/> Local Plans and Regulations <input type="checkbox"/> Structure and Infrastructure <input type="checkbox"/> Natural Systems Protection <input checked="" type="checkbox"/> Education and Awareness	<input checked="" type="checkbox"/> 1 <input checked="" type="checkbox"/> 2 <input type="checkbox"/> 3 <input type="checkbox"/> 4	<input type="checkbox"/> 5 <input type="checkbox"/> 6 <input type="checkbox"/> 7
18A- Form a working group lead by the local fire chiefs, police chiefs, and school officials to consider demolition or renovation of old, abandoned Ashaway School and present to Town Council.				
RATIONALE- WHY IS THIS IMPORTANT?				
Old Ashaway School presents a fire and wind hazard.				
BENEFITS		OBSTACLES		
Improve student safety risk by removing the deteriorating, vacant building adjacent to operational school.		Historic preservation supports may place great value on the building		
LEAD/CHAMPION		SUPPORT		
Fire Department, Police Department		Hopkinton EMA, Town Council		
POTENTIAL FUNDING SOURCES		ESTIMATED COST	TIMELINE	
Town budget- staff time		Staff time	<input checked="" type="checkbox"/> Short Term (0-3 years) <input type="checkbox"/> Medium Term (3-5 years) <input type="checkbox"/> Long Term (more than 5 years)	
OTHER NOTES				

Table 45 VULNERABLE AREA: Schools

MITIGATION ACTION	MITIGATION TYPE	ALIGNMENT WITH PLAN GOALS		ACTION PRIORITY
		<input type="checkbox"/> Local Plans and Regulations <input checked="" type="checkbox"/> Structure and Infrastructure <input type="checkbox"/> Natural Systems Protection <input type="checkbox"/> Education and Awareness	<input checked="" type="checkbox"/> 1 <input checked="" type="checkbox"/> 2 <input checked="" type="checkbox"/> 3 <input type="checkbox"/> 4	<input type="checkbox"/> 5 <input type="checkbox"/> 6 <input type="checkbox"/> 7
18B- Move forward with recommendations for old Ashaway School which creates a fire and safety hazard for nearby elementary school. Dependent upon outcome of Action 18A				
RATIONALE- WHY IS THIS IMPORTANT?				
Old Ashaway School presents a fire and wind hazard.				
BENEFITS		OBSTACLES		
Improve student safety risk by removing the deteriorating, vacant building adjacent to operational school.		Historic preservation supports may place great value on the building		
LEAD/CHAMPION		SUPPORT		
Fire Department, Police Department		Hopkinton EMA, Town Council		
POTENTIAL FUNDING SOURCES		ESTIMATED COST	TIMELINE	
Town budget- staff time		Staff time	<input checked="" type="checkbox"/> Short Term (0-3 years) <input type="checkbox"/> Medium Term (3-5 years) <input type="checkbox"/> Long Term (more than 5 years)	
OTHER NOTES				

Table 46 VULNERABLE AREA: Recreation Facilities

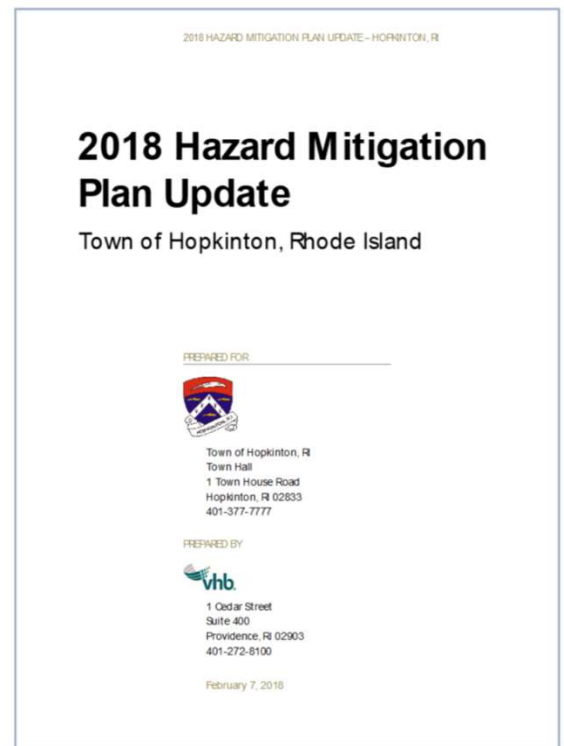
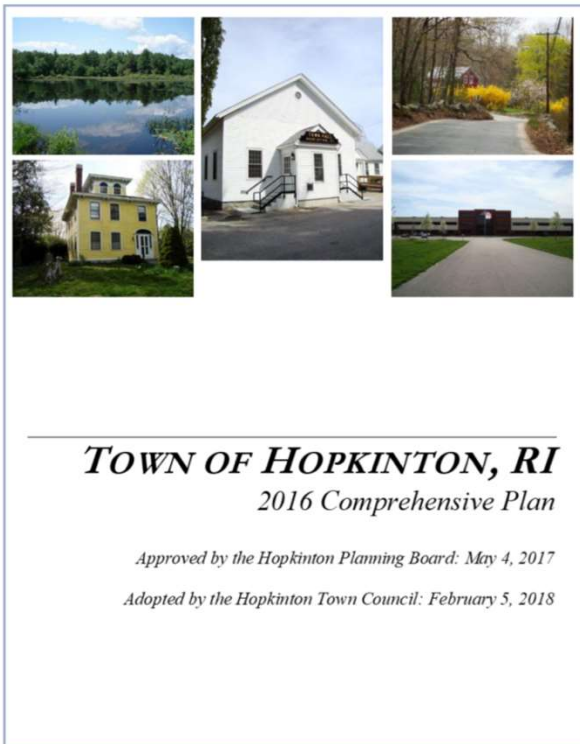
MITIGATION ACTION	MITIGATION TYPE	ALIGNMENT WITH PLAN GOALS		ACTION PRIORITY
19- Rebuild boat launch at Ashville Pond to maintain rescue boat access.	<input type="checkbox"/> Local Plans and Regulations <input checked="" type="checkbox"/> Structure and Infrastructure <input type="checkbox"/> Natural Systems Protection <input type="checkbox"/> Education and Awareness	<input checked="" type="checkbox"/> 1	<input type="checkbox"/> 5	<input type="checkbox"/> High
		<input type="checkbox"/> 2	<input type="checkbox"/> 6	<input type="checkbox"/> Medium
		<input type="checkbox"/> 3	<input type="checkbox"/> 7	<input checked="" type="checkbox"/> Low
		<input type="checkbox"/> 4		ACTION STATUS
				New
RATIONALE- WHY IS THIS IMPORTANT?				
The current boat launch is not able to handle a rescue zodiac				
BENEFITS		OBSTACLES		
Improve safety of boaters and emergency personnel				
LEAD/CHAMPION		SUPPORT		
Fire Department, Police Department		Hopkinton EMA, Town Council		
POTENTIAL FUNDING SOURCES		ESTIMATED COST	TIMELINE	
RI Dept. of Environmental Management		\$25,000	<input type="checkbox"/> Short Term (0-3 years) <input checked="" type="checkbox"/> Medium Term (3-5 years) <input type="checkbox"/> Long Term (more than 5 years)	
OTHER NOTES				
Low priority because of the low number of calls for water rescues on Ashville Pond.				

Table 47 VULNERABLE AREA: Historic Resources

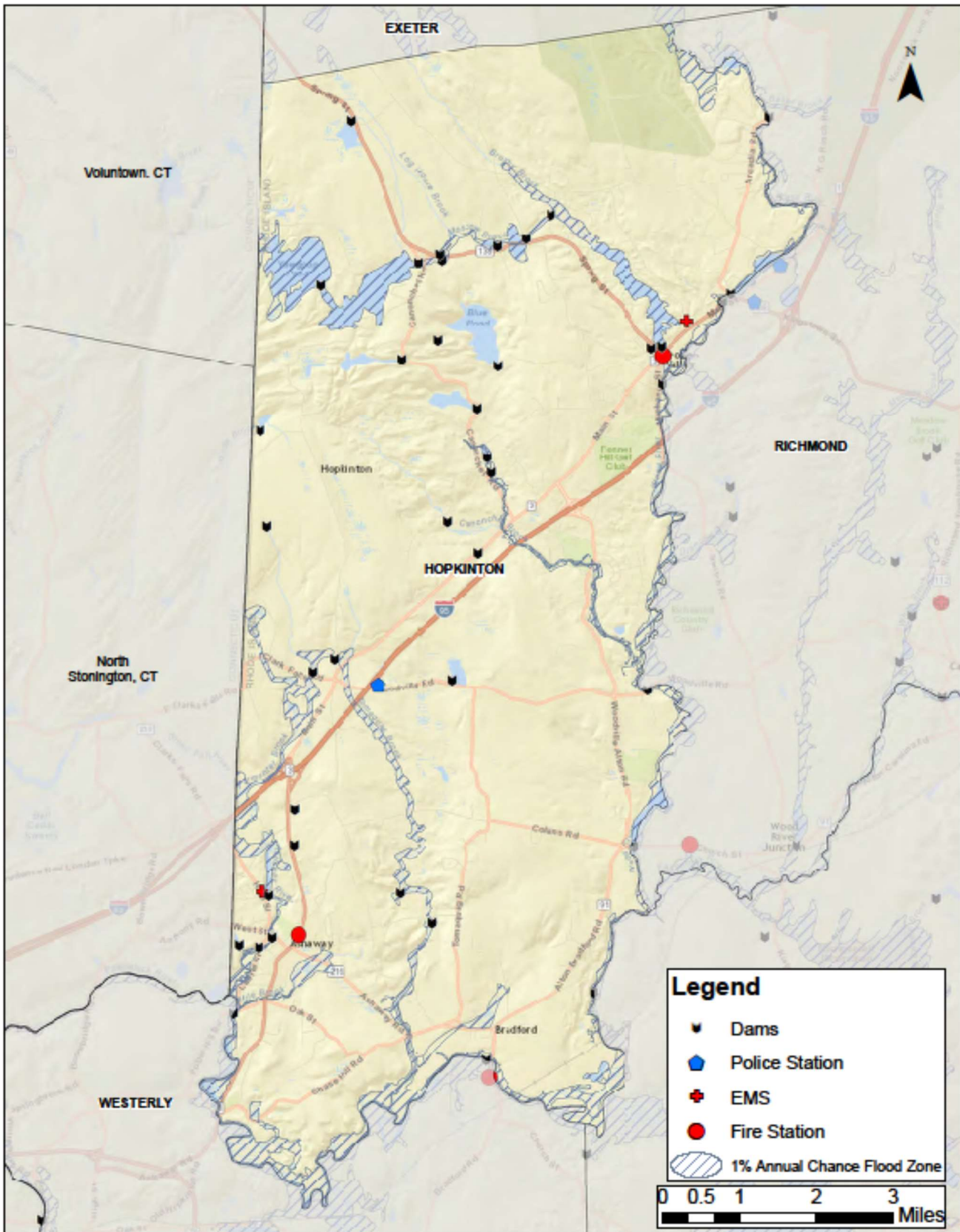
MITIGATION ACTION	MITIGATION TYPE	ALIGNMENT WITH PLAN GOALS		ACTION PRIORITY
20- Provide guidance to Hopkinton Historical Association on mitigating for natural hazards	<input type="checkbox"/> Local Plans and Regulations <input checked="" type="checkbox"/> Structure and Infrastructure <input type="checkbox"/> Natural Systems Protection <input checked="" type="checkbox"/> Education and Awareness	<input checked="" type="checkbox"/> 1	<input type="checkbox"/> 5	<input type="checkbox"/> High
		<input type="checkbox"/> 2	<input type="checkbox"/> 6	<input type="checkbox"/> Medium
		<input type="checkbox"/> 3	<input type="checkbox"/> 7	<input checked="" type="checkbox"/> Low
		<input type="checkbox"/> 4		ACTION STATUS
				New
RATIONALE- WHY IS THIS IMPORTANT?				
Historic resources are part of the local character and economy.				
BENEFITS		OBSTACLES		
A more resilient town.				
LEAD/CHAMPION		SUPPORT		
Hopkinton EMA				
POTENTIAL FUNDING SOURCES		ESTIMATED COST	TIMELINE	
None		None	<input checked="" type="checkbox"/> Short Term (0-3 years) <input type="checkbox"/> Medium Term (3-5 years) <input type="checkbox"/> Long Term (more than 5 years)	
OTHER NOTES				
See FEMA document here: Integrating Historic Property and Cultural Resource Considerations into Hazard Mitigation Planning. https://www.fema.gov/media-library/assets/documents/4317				

Appendix B

Town of Hopkinton Map Resource Packet* Used During Workshop



*Gathered from Hopkinton's Comprehensive Plan (2016) and Local Hazard Mitigation Plan (2018)



Source: Rhode Island GIS. Dams (2012), Law Enforcement (2014), EMS (2008), Fire Stations (2014), FEMA flood zones (2013)

**MAP 14
EXISTING
ZONING**

**TOWN OF
HOPKINTON
RHODE ISLAND**

Comprehensive Plan, (2017)

Map Legend

Zoning

- COMMERCIAL
- COMMERCIAL SPECIAL
- MANUFACTURING
- MANUFACTURING SPECIAL
- NEIGHBORHOOD BUSINESS
- NEIGHBORHOOD BUSINESS SPECIAL
- PLANNED UNIT DEVELOPMENT
- RESIDENTIAL (R-1)
- RESIDENTIAL (RFR-80)
- RESIDENTIAL SPECIAL

Features

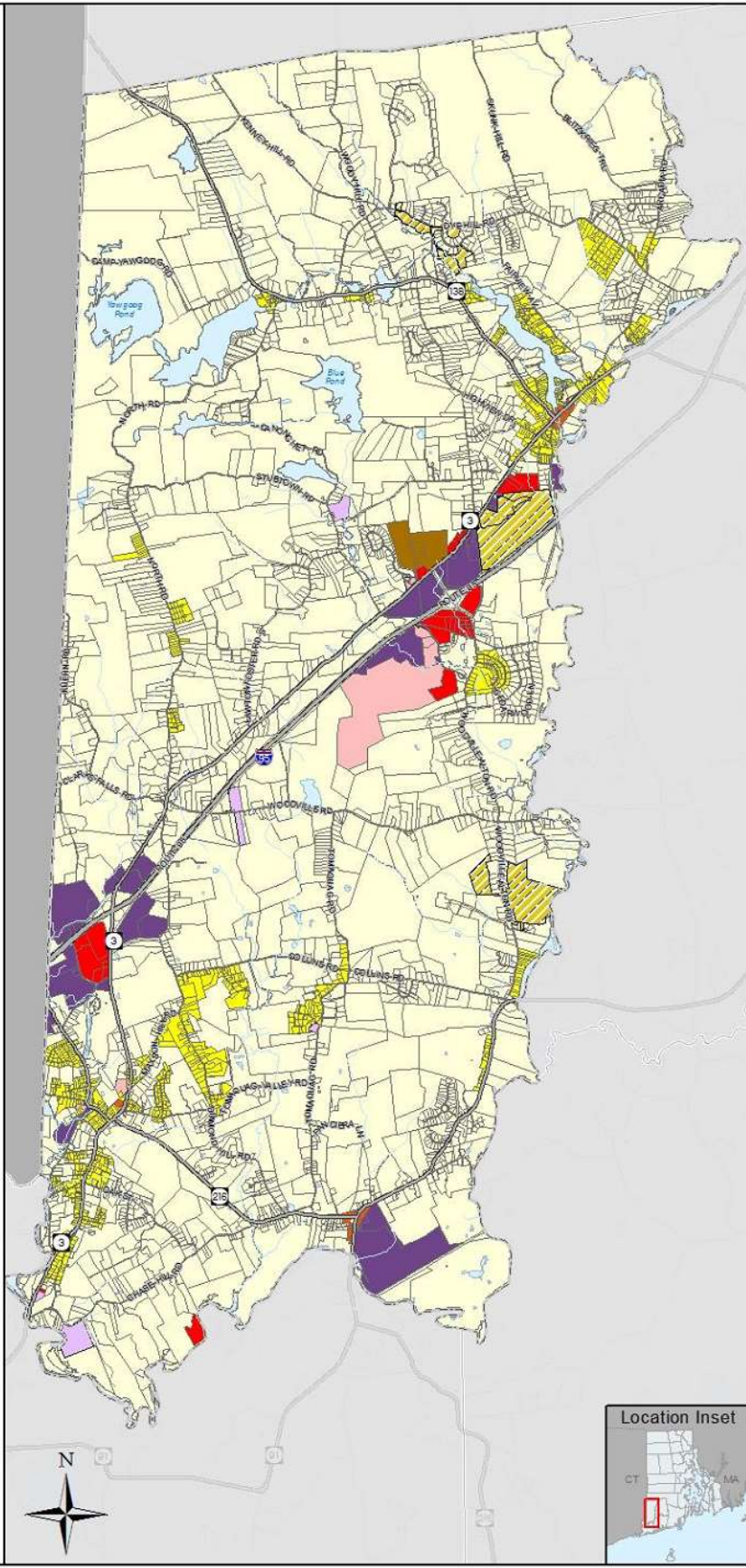
- Highways
- Roads
- Water
- Rivers and Streams

Boundaries

- Hopkinton
- RI Municipality
- Other States



This map is not the product of a Professional Land Survey. It was created by (Ed Vazquez) for general reference, informational, planning or guidance use, and is not a legally authoritative source as to location of natural or manmade features. Proper interpretation of this map may require the assistance of appropriate professional services. The Town of Hopkinton makes no warranty, express or implied, related to the spatial accuracy, reliability, completeness, or currentness of this map.



**MAP 15
ZONING
INCONSISTENCY**

**TOWN OF
HOPKINTON
RHODE ISLAND**

Comprehensive Plan, (2017)

Map Legend

Rezone

- Manufacturing
- Commerical
- Mixed Use Village
- Open Space

Features

- Highways
- Roads
- Water
- Rivers & Streams
- Parcels

Boundaries

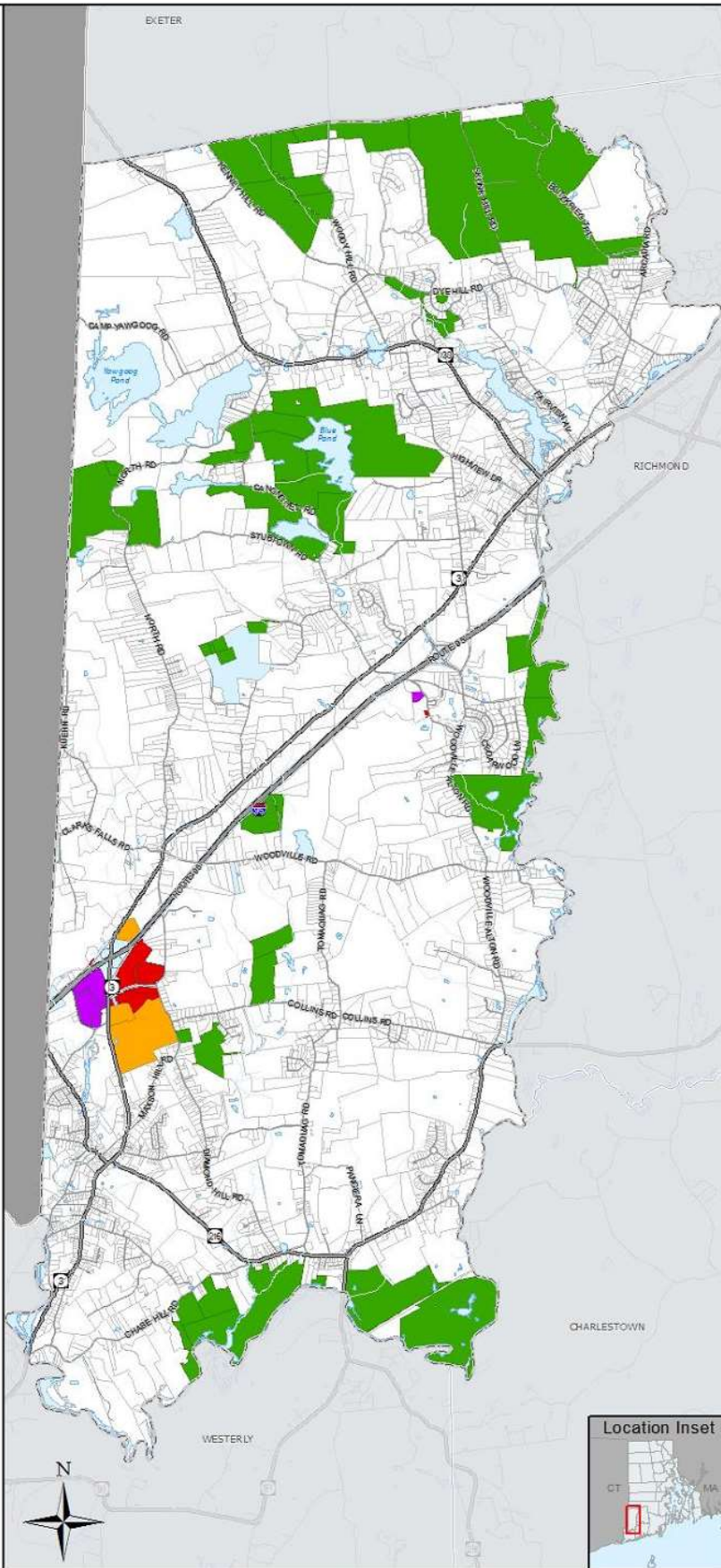
- Hopkinton
- RI Municipalities
- Other States



This map is not the product of a Professional Land Survey. It was created by (Ed Vazquez) for general reference, informational, planning or guidance use, and is not a legally authoritative source as to location of natural or manmade features. Proper interpretation of this map may require the assistance of appropriate professional services. The Town of Hopkinton makes no warranty, express or implied, related to the spatial accuracy, reliability, completeness, or currentness of this map.



Ed Vazquez
GIS Data\2016-Comp-plan
Date Created: 5/8/2017



**MAP 12
EXISTING LAND USE**

**TOWN OF
HOPKINTON
RHODE ISLAND**



Comprehensive Plan, (2017)

Map Legend

Existing Land Use

-  Low Density Residential
-  Medium Density Residential
-  High Density Residential
-  Commercial
-  Industrial/Manufacturing
-  Institutional
-  Transportation & Utilities
-  Cemeteries
-  Developed Recreation
-  Agricultural
-  Undeveloped/Unprotected
-  Wetland
-  Conservation Land

Features

-  Highways
-  Roads

Boundaries

-  Hopkinton
-  RI Municipalities
-  Other States

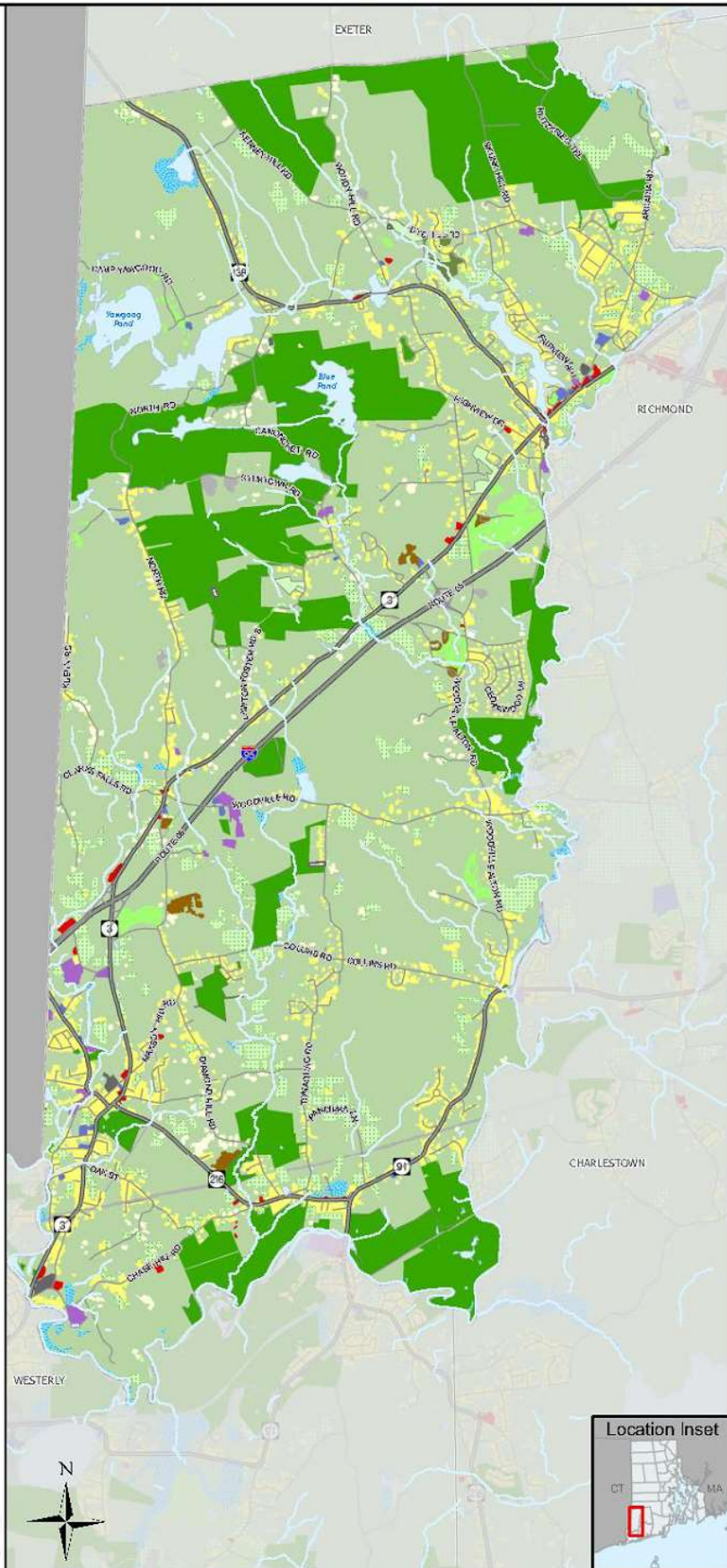


This map is not the product of a Professional Land Survey. It was created by Ed Vazquez for general reference, informational, planning or guidance use, and is not a legally authoritative source as to location of natural or manmade features. Proper interpretation of this map may require the assistance of appropriate professional services. The Town of Hopkinton makes no warranty, express or implied, related to the spatial accuracy, reliability, completeness, or currency of this map.



RIGIS

Ed Vazquez
GIS Data\2016-Comp-plan
Date Created: 12/1/2017



**MAP 13
FUTURE LAND USE**

**TOWN OF
HOPKINTON
RHODE ISLAND**

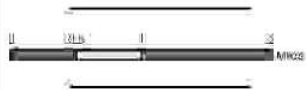
Comprehensive Plan, (2017)

Map Legend

- Urban Services Boundary
- Government/Institutional
- Agricultural
- Manufacturing
- Commercial
- High Density Residential
- Medium Density Residential
- Low Density Residential
- Mixed Use Village
- Permanently Protected Land
- Open Space

Features

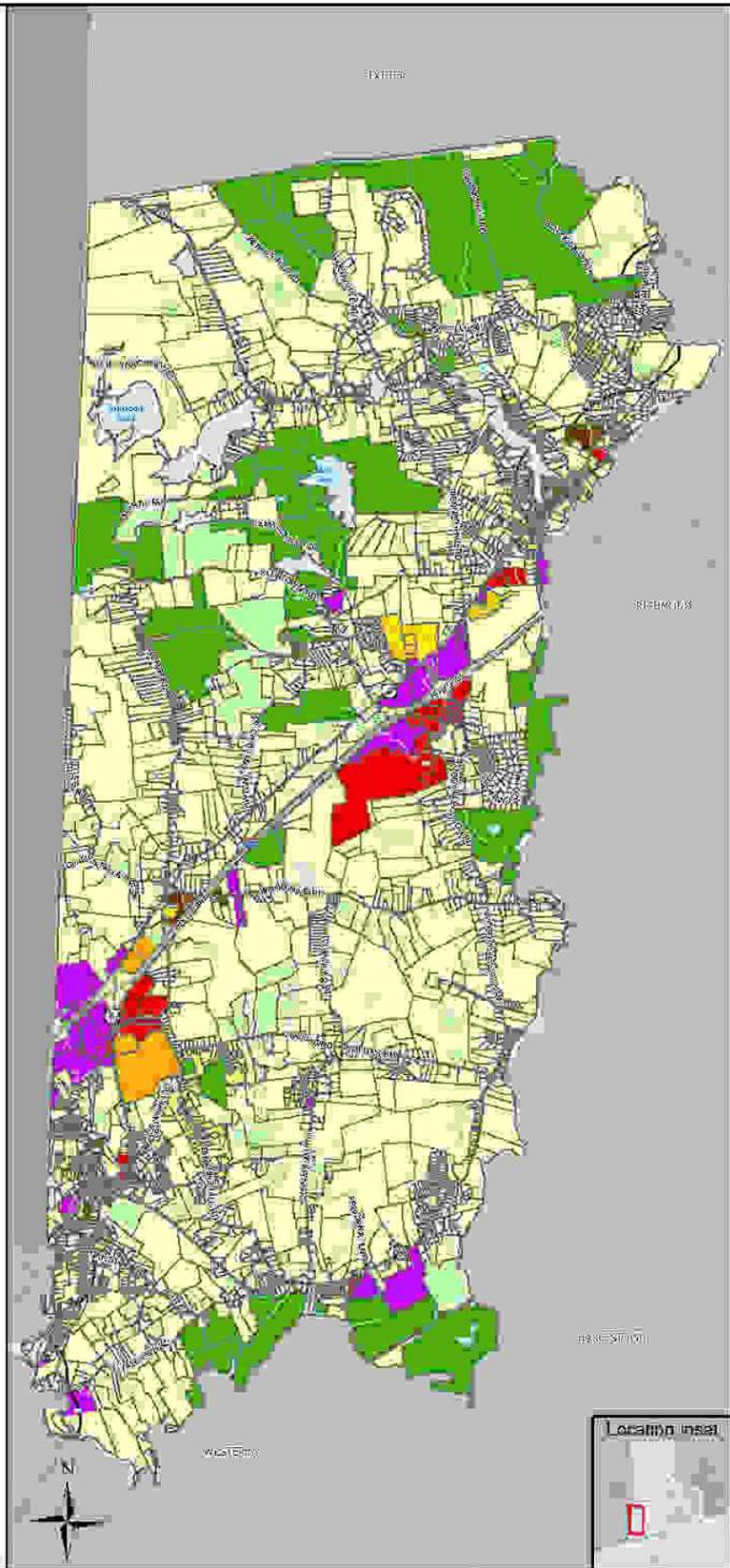
- Highways
- Roads
- Water
- Rivers & Streams
- RI Municipalities
- Other States



This map is the property of the Town of Hopkinton, Rhode Island. It is not to be used for any other purpose without the written permission of the Town of Hopkinton. The Town of Hopkinton, Rhode Island, is not responsible for any errors or omissions on this map. The Town of Hopkinton, Rhode Island, is not responsible for any damages or losses resulting from the use of this map.



Ed Vazquez
at 5 Data\2016-Comp-plan
Date Modified: 7/8/2017



**MAP 1
EXISTING
RECREATIONAL SITES
TOWN OF
HOPKINTON
RHODE ISLAND
Comprehensive Plan, (2017)**

Map Legend

Municipal Recreation Facilities

- ① Ashaway Elementary School
- ② Briggs Park
- ③ Crandall Field
- ④ Dow Field
- ⑤ Hope Valley School
- ⑥ Langworthy Field
- ⑦ Laurel Street Park
- ⑧ Polish Park

State Recreation Sites

- ⑨ Ashville Pond
- ⑩ Blue Pond
- ⑪ Locustville Pond
- ⑫ Mechanic St
- ⑬ Moscow Pond
- ⑭ Rockville Management Area
- ⑮ Tefft River Access

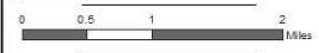
- Campgrounds
- Golf Courses
- State Conservation Land
- Town Conservation Land
- ★ Fish / Boat Access

Features

- Highways
- Roads
- Water
- Rivers and Streams

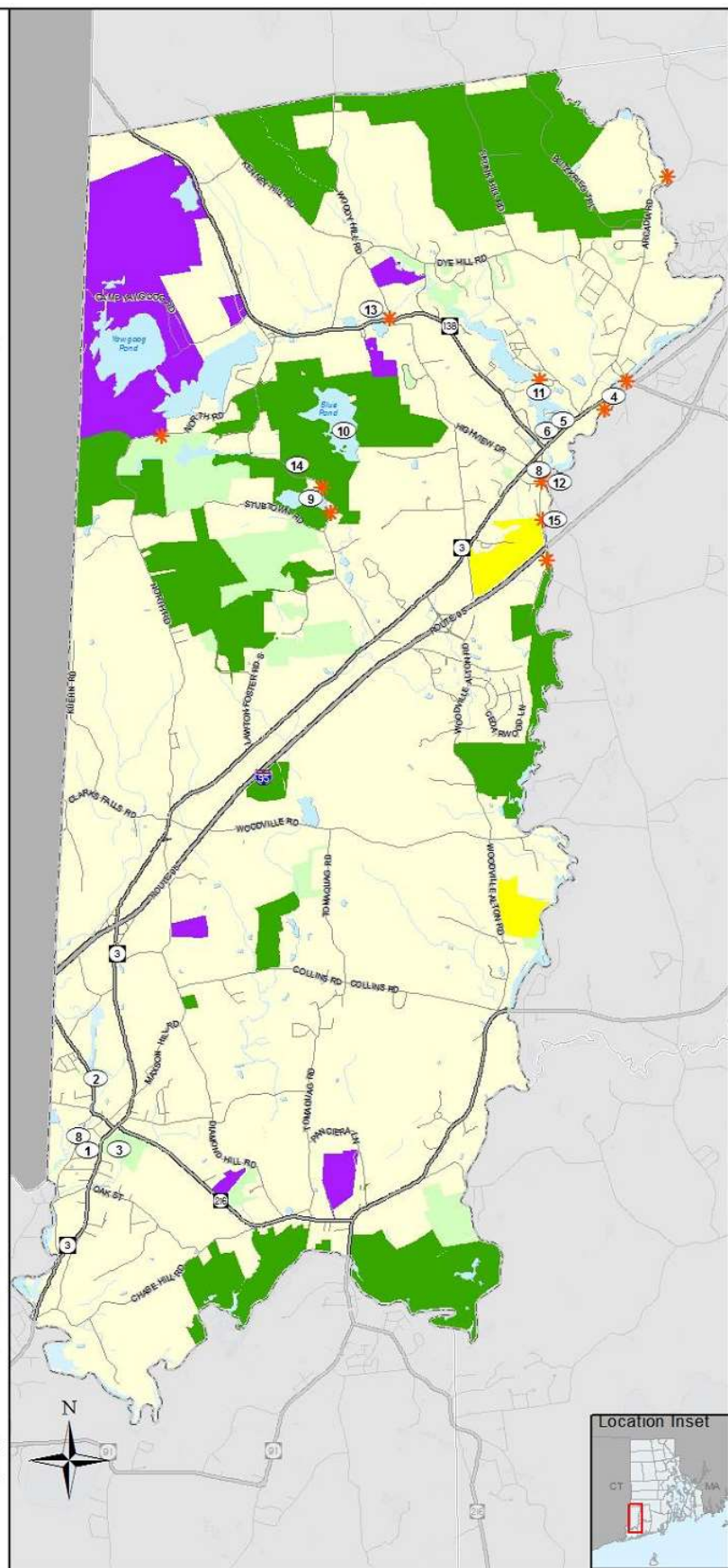
Boundaries

- Hopkinton
- RI Municipalities
- Other States



This map is not the product of a Professional Land Survey. It was created by (Ed Vazquez) for general reference, informational, planning or guidance use, and is not a legally authoritative source as to location of natural or manmade features. Proper interpretation of this map may require the assistance of appropriate professional services. The Town of Hopkinton makes no warranty, express or implied, related to the spatial accuracy, reliability, completeness, or currentness of this map.

Ed Vazquez
GIS Data\2016-Comp-plan
Date Created: 5/8/2017



MAP 10 EXISTING TRANSPORTATION NETWORK

TOWN OF HOPKINTON RHODE ISLAND

Comprehensive Plan, (2017)

Map Legend

- RIPTA Park and Ride
- 301 Rural Ride
- 95X Westerly Park & Ride
- Railway
- Bike Path

Features

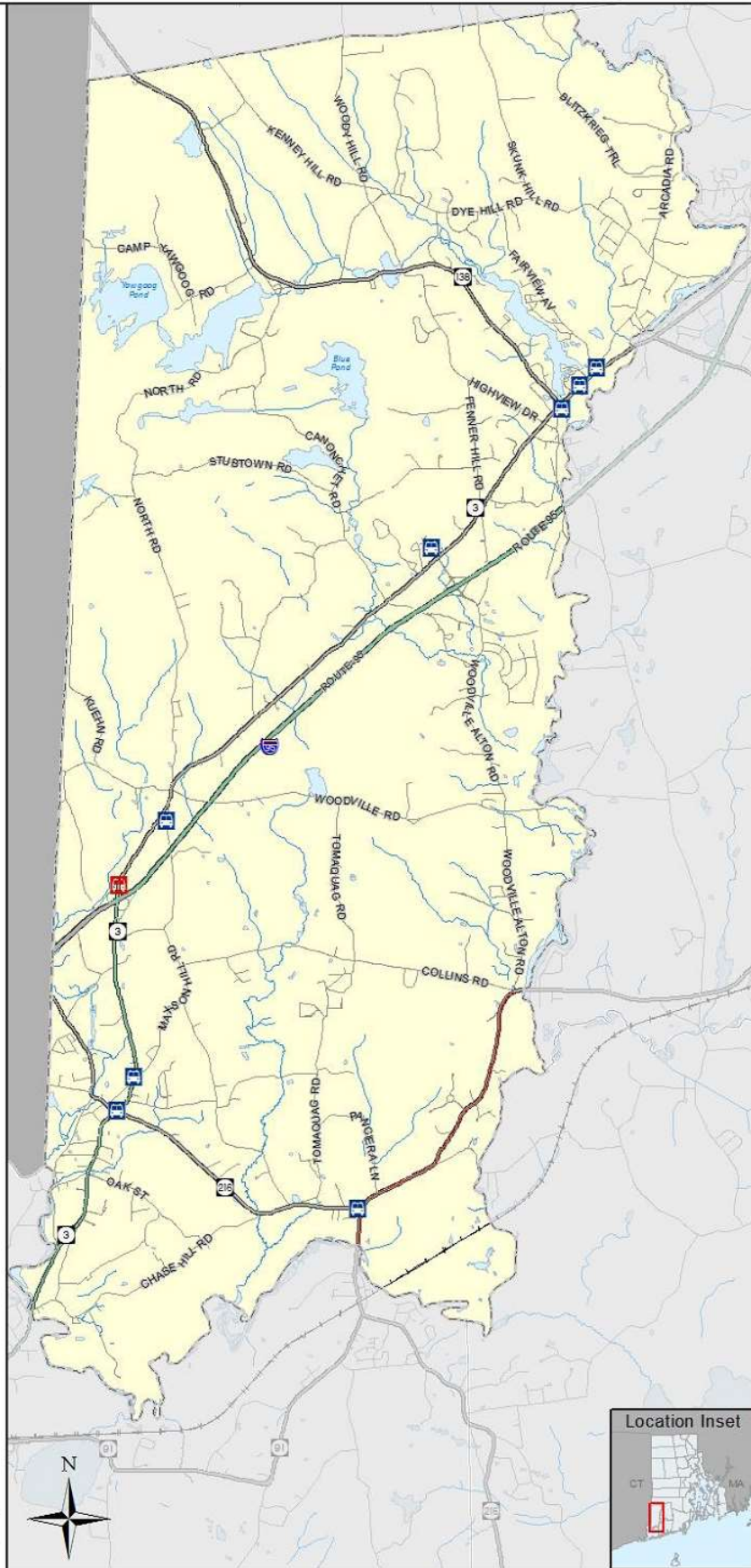
- Highways
- Roads
- Water
- Rivers & Streams

Boundaries

- Hopkinton
- RI Municipalities
- Other States



This map is not the product of a Professional Land Survey. It was created by (Ed Vazquez) for general reference, informational, planning or guidance use, and is not a legally authoritative source as to location of natural or manmade features. Proper interpretation of this map may require the assistance of appropriate professional services. The Town of Hopkinton makes no warranty, express or implied, related to the spatial accuracy, reliability, completeness, or currentness of this map.





MAP 8 EXISTING WATER SERVICE AREAS

TOWN OF HOPKINTON RHODE ISLAND

Comprehensive Plan, (2017)

Map Legend

-  Richmond Water Line
-  Current Water District Users

Features

-  Highways
-  Roads
-  Water
-  Rivers & Streams

Boundaries

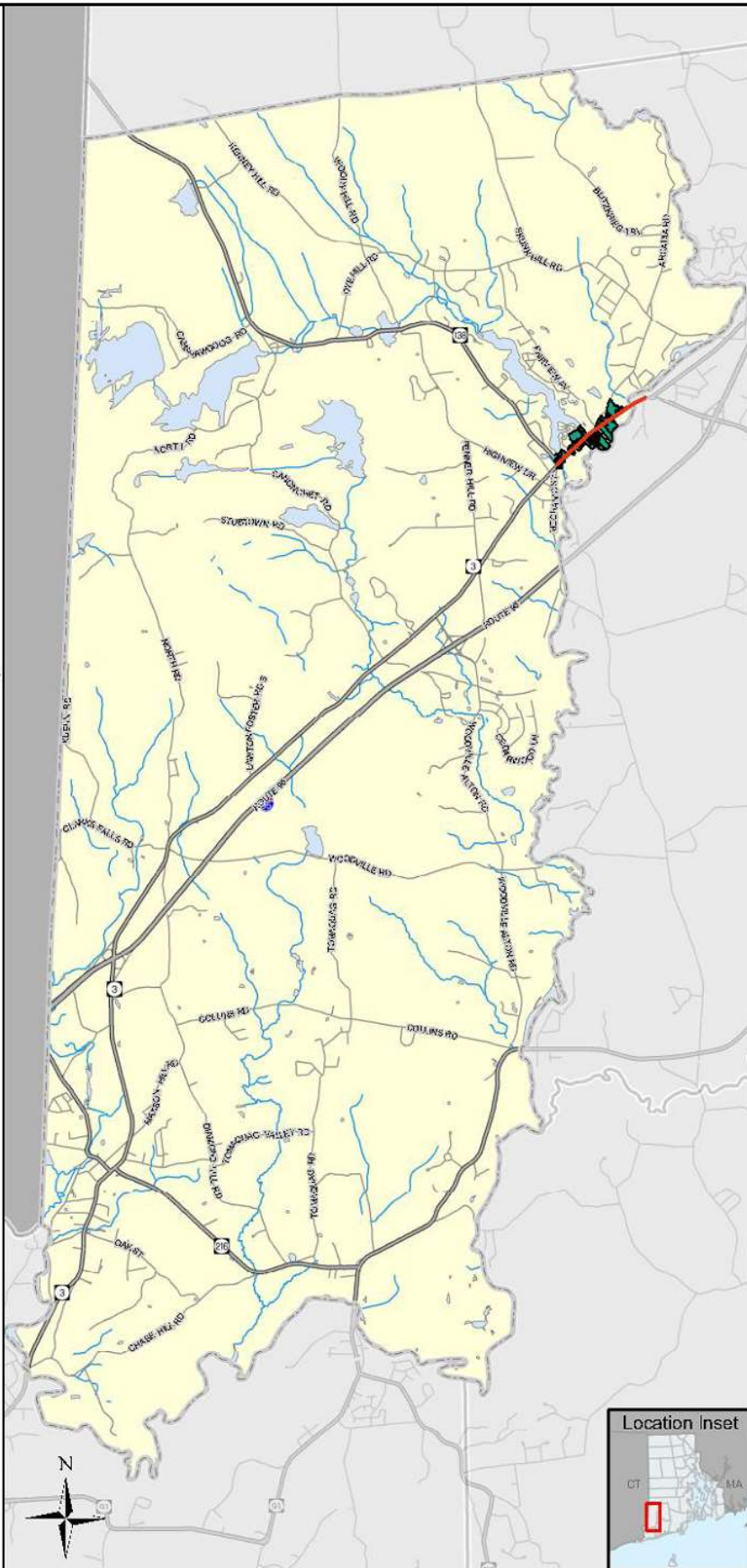
-  Hopkinton
-  RI Municipalities
-  Other States



This map is not the product of a Professional Land Survey. It was created by [Ed Vazquez] for general reference, informational, planning or guidance use, and is not a legally authoritative source as to location of natural or manmade features. Proper interpretation of this map may require the assistance of appropriate professional services. The Town of Hopkinton makes no warranty, express or implied, related to the spatial accuracy, reliability, completeness, or currentness of this map.



Ed Vazquez
GIS Data\2016-Comp-plan
Date Created: 12/1/2017



**MAP 11
FLOOD HAZARD
AREAS**

**TOWN OF
HOPKINTON
RHODE ISLAND**

Comprehensive Plan, (2017)

Map Legend

Flood Zones

- 0.2% Flooding
- 1% Flooding

Features

- Highways
- Roads
- Water
- Rivers & Streams

Boundaries

- Hopkinton
- RI Municipalities
- Other States

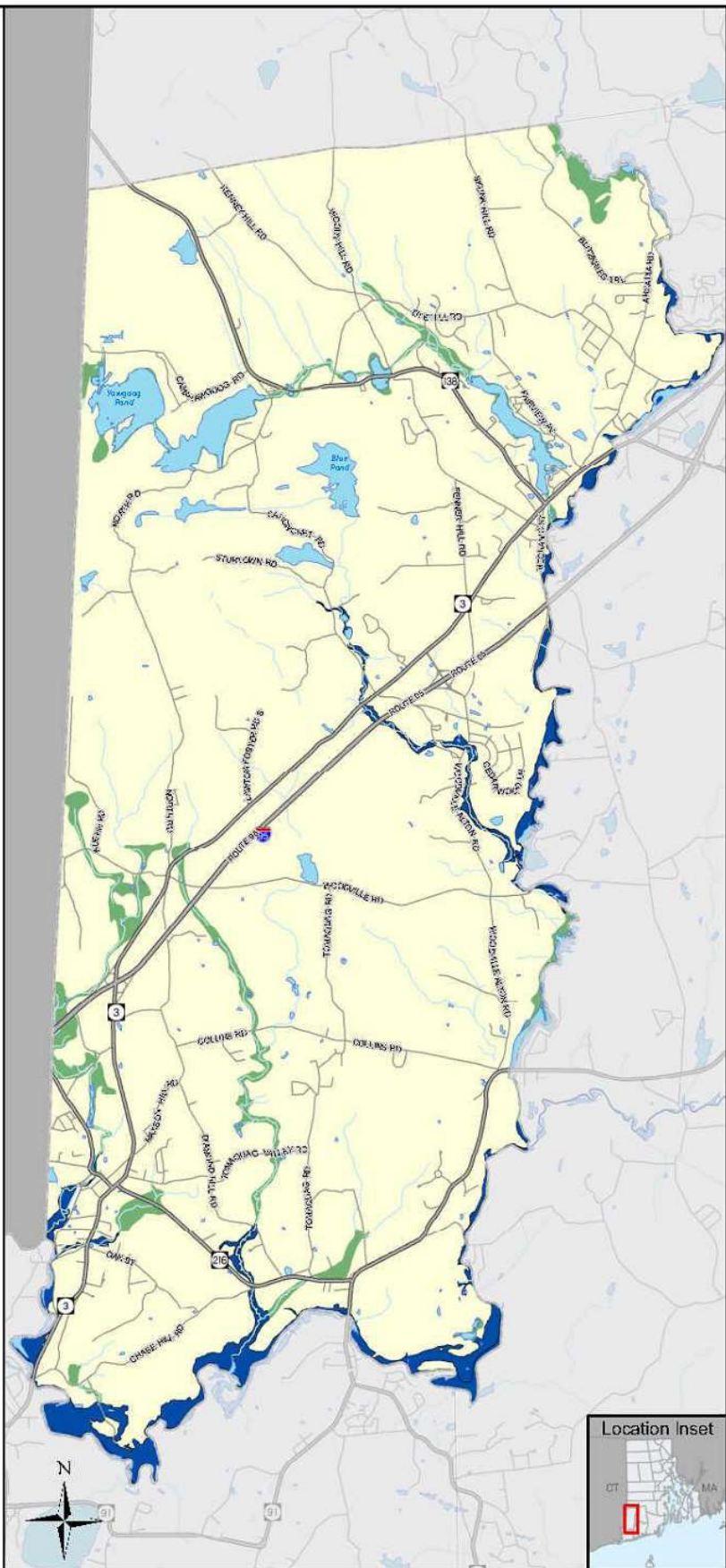


This map is not the product of a Professional Land Survey. It was created by (Ed Vazquez) for general reference, informational, planning or guidance use, and is not a legally authoritative source as to location of natural or manmade features. Proper interpretation of this map may require the assistance of appropriate professional services. The Town of Hopkinton makes no warranty, express or implied, related to the spatial accuracy, reliability, completeness, or currentness of this map.



RIGIS

Ed Vazquez
GIS Data\2016-Comp-plan
Date Created: 5/8/2017



MAP 3 GROUNDWATER AND WELLHEAD PROTECTION AREAS

TOWN OF HOPKINTON RHODE ISLAND

Map Legend

Wells

- Community
- Non - Community

Features

- ⚡ Highways
- 🛣️ Roads
- 💧 Water
- 🌊 rivers and streams

Boundaries

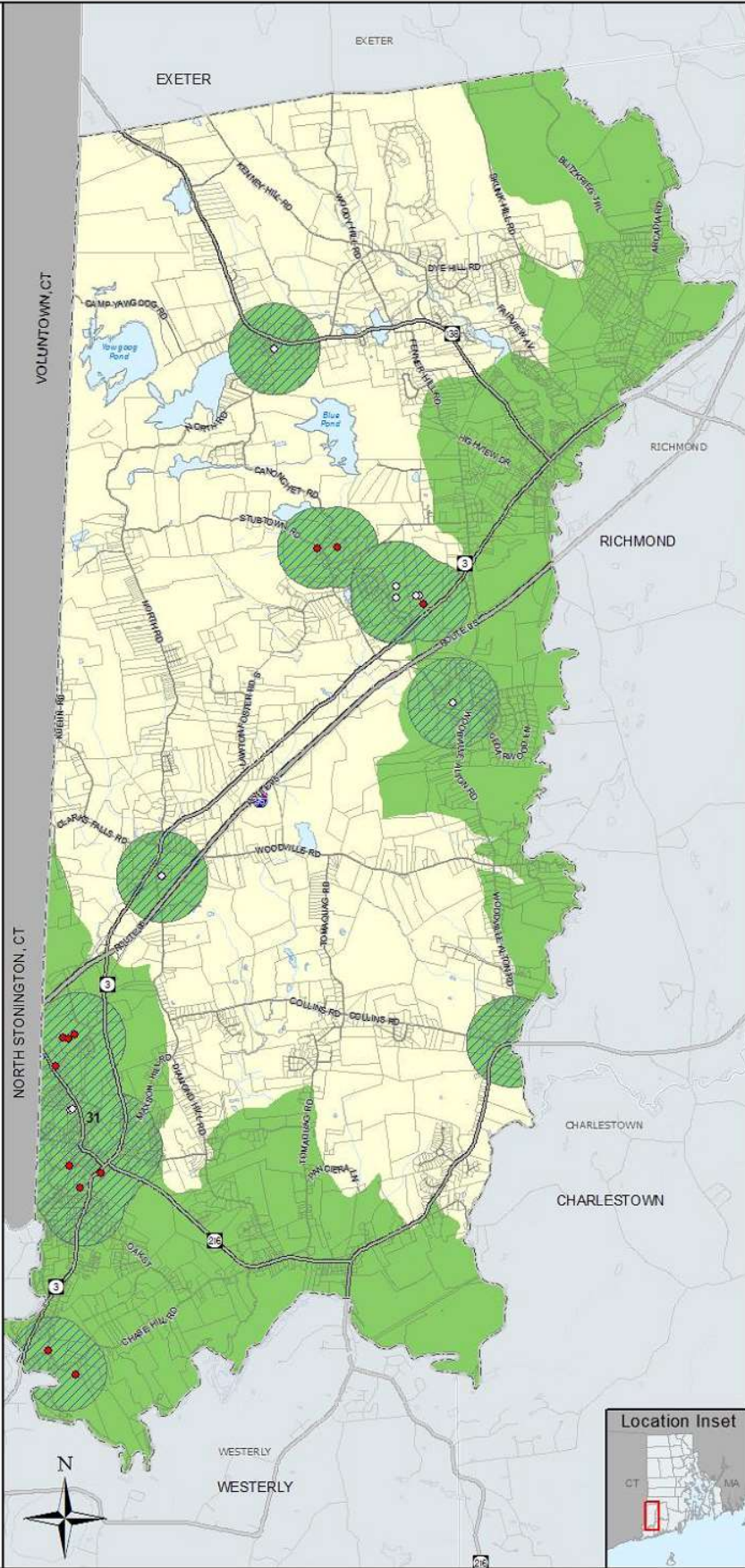
- ⬜ Hopkinton
- ⬜ RI Municipal
- ⬜ Other States
- 🟢 Groundwater Recharge Areas
- 🟢 Wellhead Protection Areas within Primary Protection Zone



This map is not the product of a Professional Land Survey. It was created by (Ed Vazquez) for general reference, informational, planning or guidance use, and is not a legally authoritative source as to location of natural or manmade features. Proper interpretation of this map may require the assistance of appropriate professional services. The Town of Hopkinton makes no warranty, express or implied, related to the spatial accuracy, reliability, completeness, or currentness of this map.



Ed Vazquez
updated Groundwater Map for Zoning rev 1
Date Created: 9/2/2016



**MAP 6
HISTORIC &
CULTURAL RESOURCE
AREAS**

**TOWN OF
HOPKINTON
RHODE ISLAND**

Comprehensive Plan, (2017)

Map Legend

- National Register Historic District
- Local Historic District

Features

- Highways
- Roads
- Water
- Rivers & Streams

Boundaries

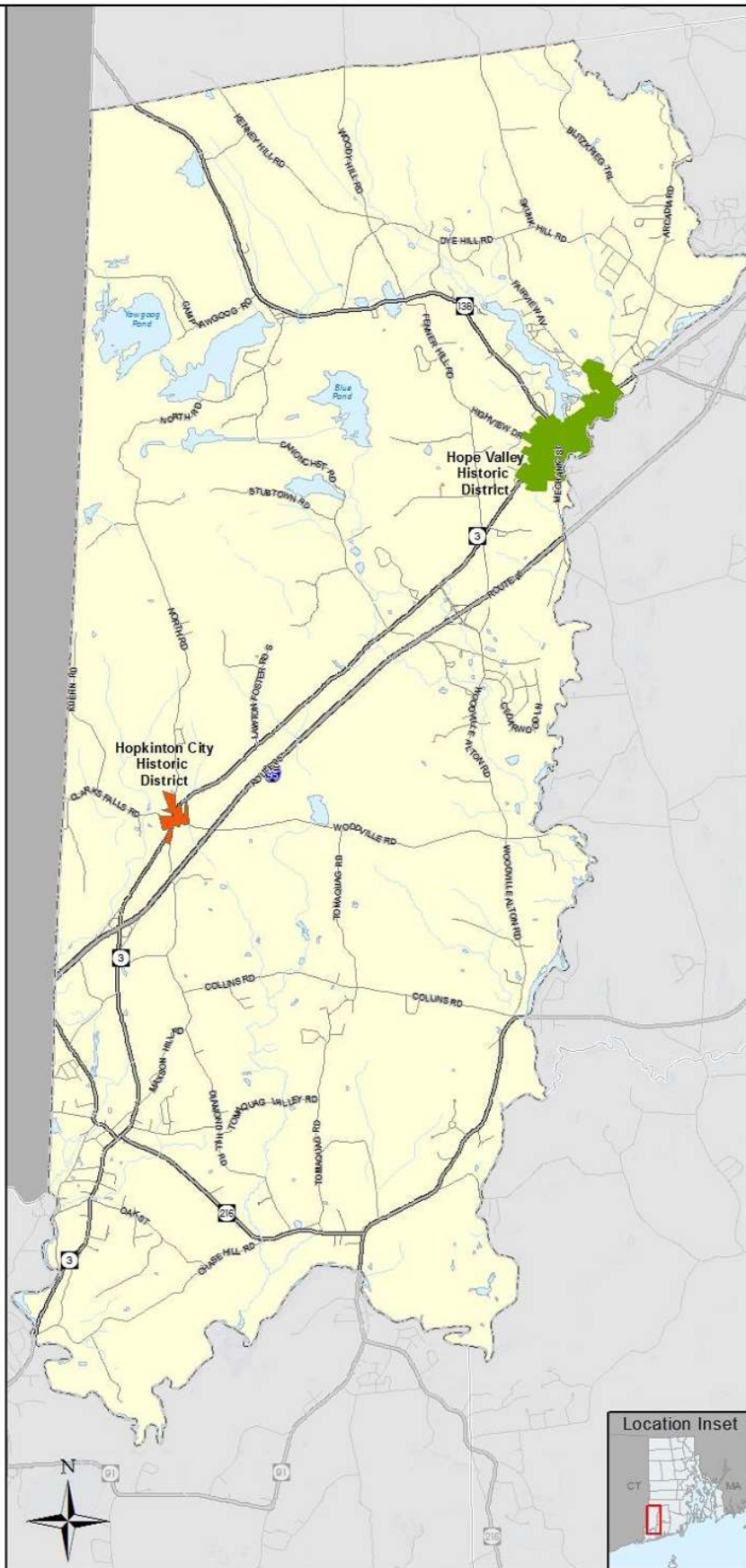
- Hopkinton
- RI Municipalities
- Other States



This map is not the product of a Professional Land Survey. It was created by (Ed Vazquez) for general reference, informational, planning or guidance use, and is not a legally authoritative source as to location of natural or man-made features. Proper interpretation of this map may require the assistance of appropriate professional services. The Town of Hopkinton makes no warranty, express or implied, related to the spatial accuracy, reliability, completeness, or currentness of this map.



Ed Vazquez
GIS Data\2016-Comp-plan
Date Created: 5/8/2017



MAP 5
NATURAL RESOURCES
AND NATURAL RESOURCE
AREAS
TOWN OF
HOPKINTON
RHODE ISLAND
 Comprehensive Plan, (2017)

Map Legend

Wetlands & Forests

-  Forests
-  Developed Land
-  Wetlands
-  Natural Heritage Areas

Features

-  Highways
-  Roads
-  Water
-  Rivers & Streams

Boundaries

-  Hopkinton
-  RI Municipalities
-  Other States

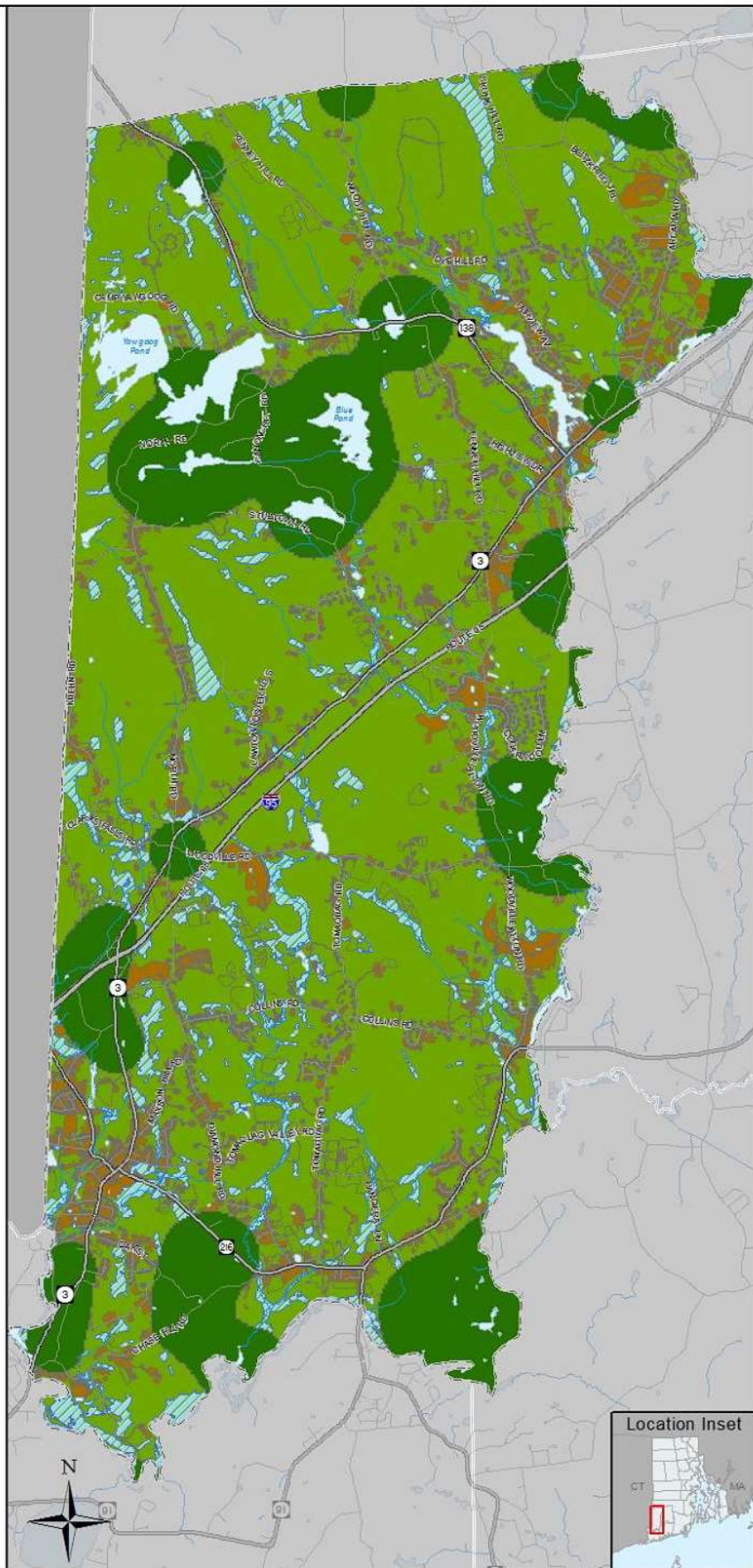


This map is not the product of a Professional Land Survey. It was created by (Ed Vazquez) for general reference, informational, planning or guidance use, and is not a legally authoritative source as to location of natural or manmade features. Proper interpretation of this map may require the assistance of appropriate professional services. The Town of Hopkinton makes no warranty, express or implied, related to the spatial accuracy, reliability, completeness, or currentness of this map.



RIGIS

Ed Vazquez
 GIS Data\2016-Comp-plan
 Date Created: 5/8/2017



**MAP 9
PUBLIC
INFRASTRUCTURE
AND FACILITIES
TOWN OF
HOPKINTON
RHODE ISLAND**
Comprehensive Plan, (2017)

Map Legend

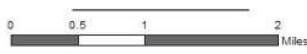
- ① Ashaway Elementary School
- ② Ashaway Fire Station
- ③ Crandall House
- ④ Hope Valley Fire Station
- ⑤ Hope Valley School
- ⑥ Police Department
- ⑦ Public Works
- ⑧ Thayer House
- ⑨ Town Hall
- ⑩ Ashaway Free Library
- ⑪ Langworthy Public Library
- ⑫ Wood River Health Services

Features

- Highways
- Roads
- Water
- Rivers and Streams

Boundaries

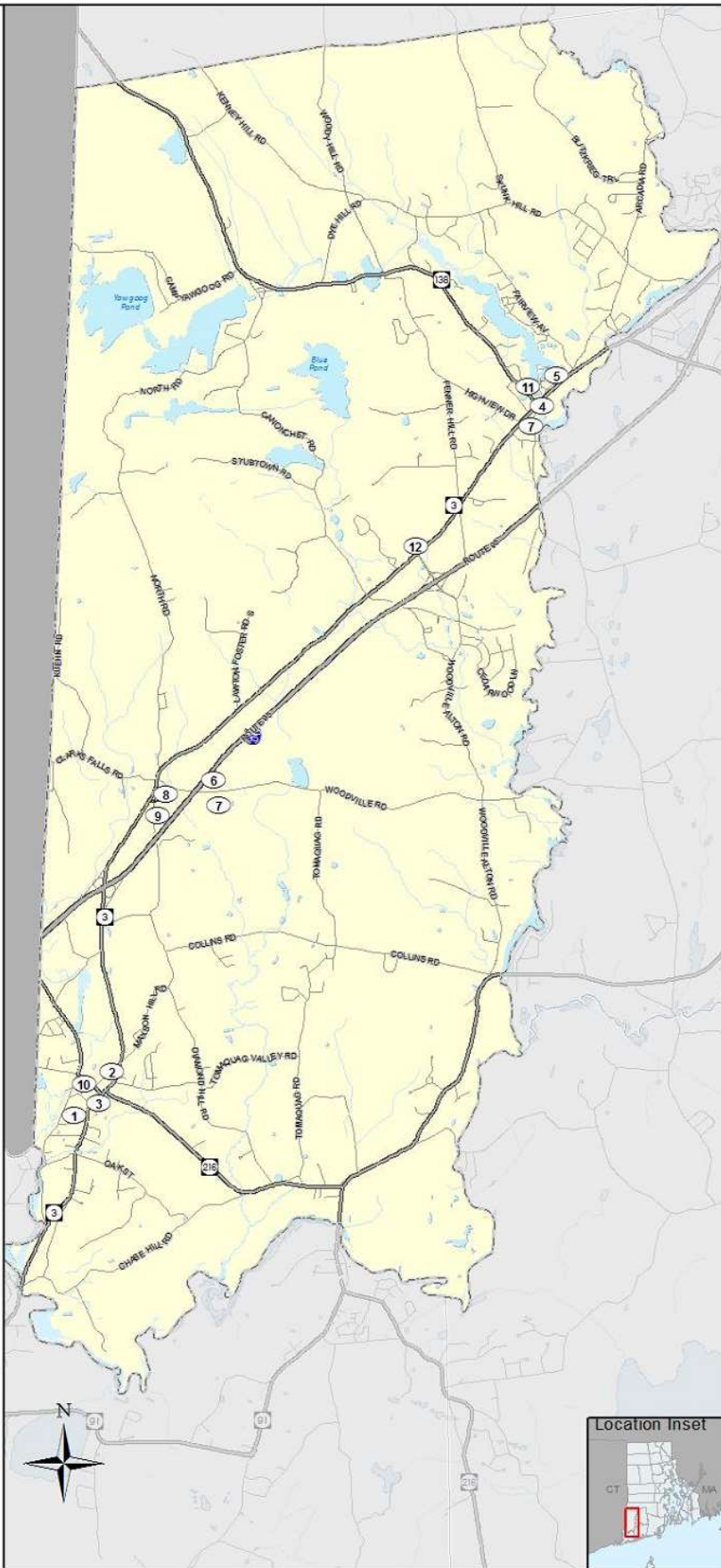
- Hopkinton
- RI Municipal
- Other States



This map is not the product of a Professional Land Survey. It was created by (Ed Vazquez) for general reference, informational, planning or guidance use, and is not a legally authoritative source as to location of natural or manmade features. Proper interpretation of this map may require the assistance of appropriate professional services. The Town of Hopkinton makes no warranty, express or implied, related to the spatial accuracy, reliability, completeness, or currentness of this map.



Ed Vazquez
GIS Data\2016-Comp-plan
Date Created: 5/8/2017



**MAP 4
VALUABLE
AGRICULTURAL
SOILS**

**TOWN OF
HOPKINTON
RHODE ISLAND**

Comprehensive Plan, (2017)

Map Legend

Soils

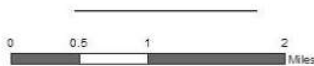
- Prime Soils
- Statewide Important Soils

Features

- Highways
- Roads
- Water
- Rivers & Streams

Boundaries

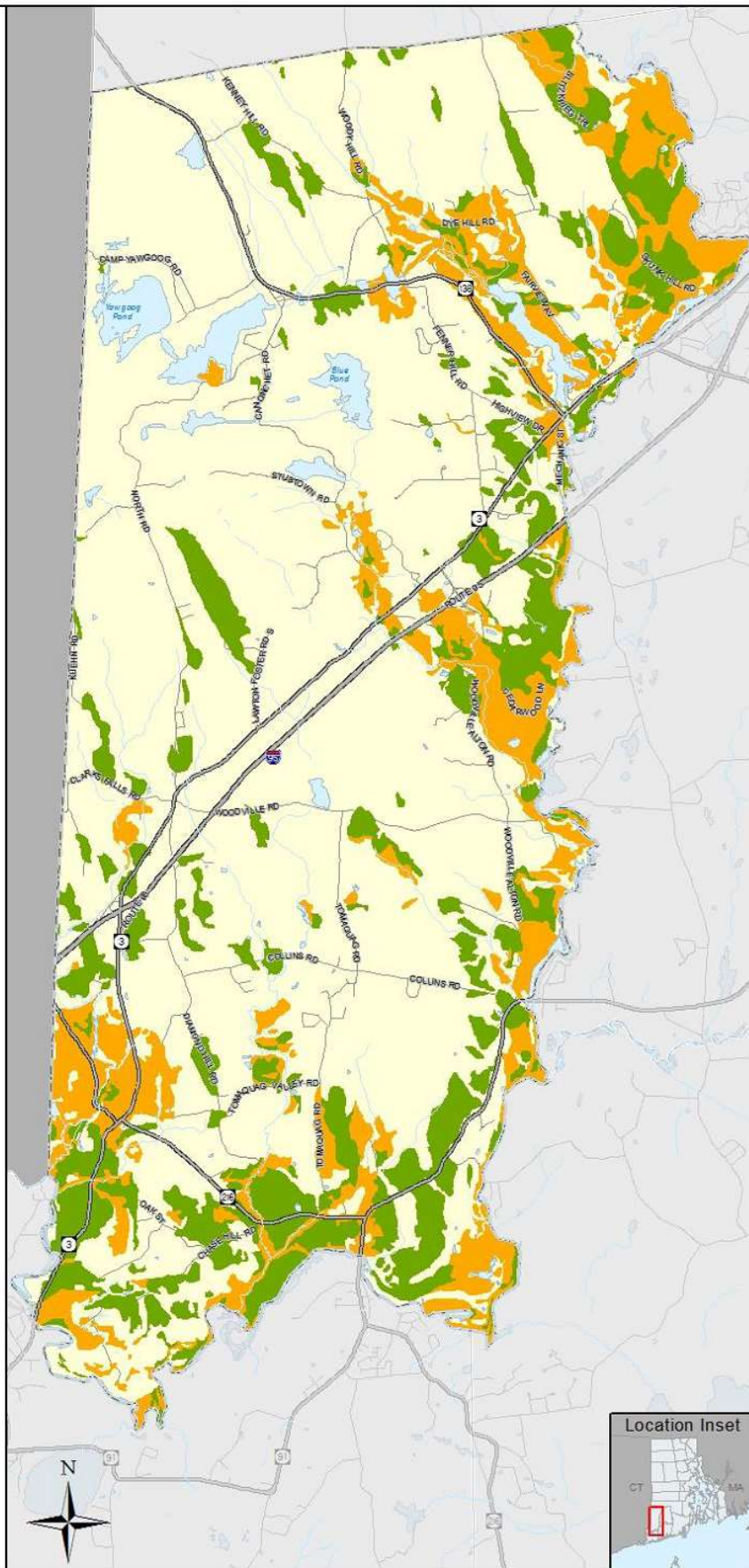
- Hopkinton
- RI Municipalities
- Other States



This map is not the product of a Professional Land Survey. It was created by (Ed Vazquez) for general reference, informational, planning or guidance use, and is not a legally authoritative source as to location of natural or manmade features. Proper interpretation of this map may require the assistance of appropriate professional services. The Town of Hopkinton makes no warranty, express or implied, related to the spatial accuracy, reliability, completeness, or currentness of this map.



Ed Vazquez
GIS Data\2016-Comp-plan
Date Created: 5/8/2017



MAP 7
WATER-SUPPLY
NATURAL RESOURCES
AND SENSITIVE WATER
SUPPLY AREAS
TOWN OF
HOPKINTON
RHODE ISLAND

Comprehensive Plan, (2017)

- Groundwater Recharge Areas
- Aquifers
- Wellhead Protection Non Community

Wells

- Community
- Non-Community

Features

- Highways
- Roads
- Water
- Rivers & Streams

Boundaries

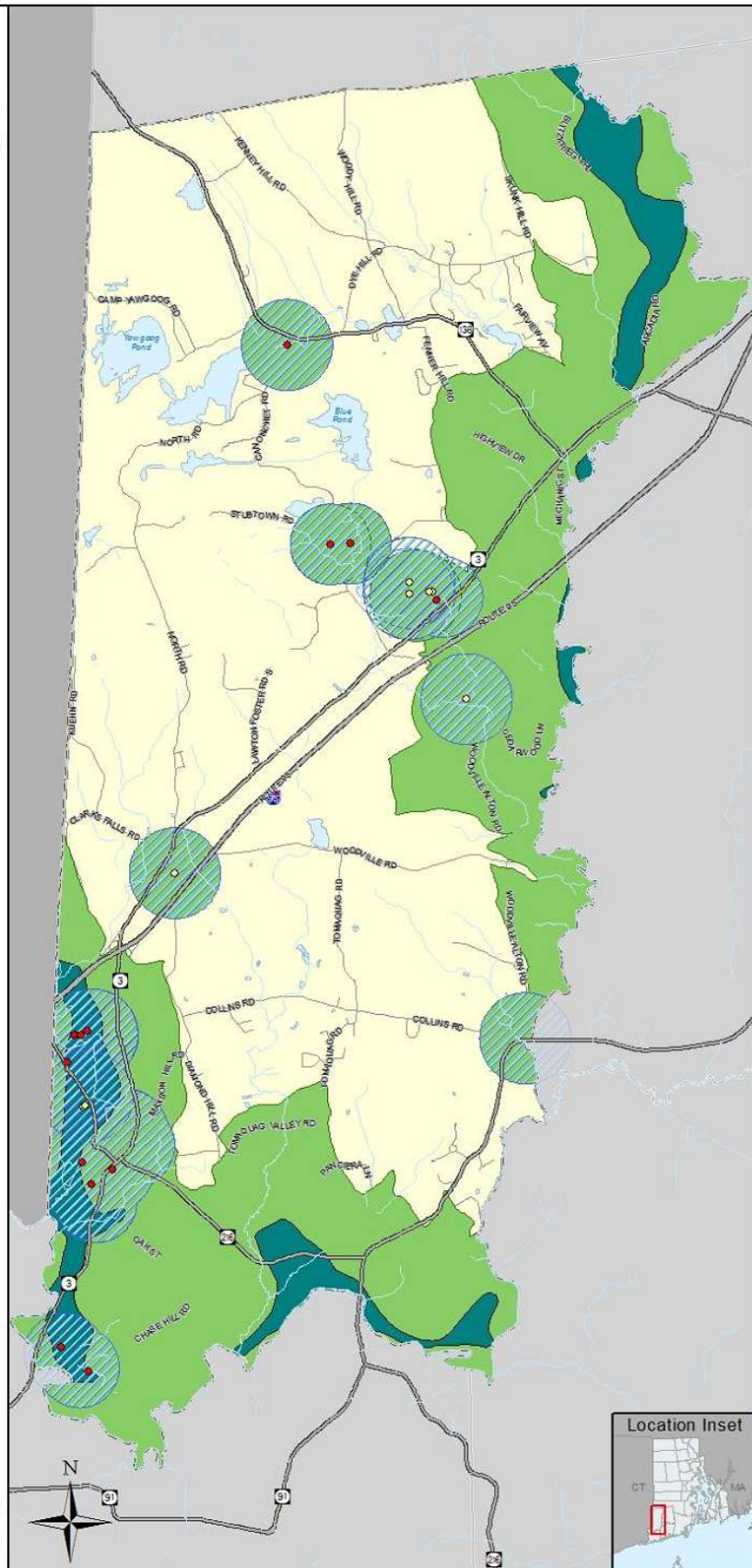
- Hopkinton
- RI Municipalities
- Other States



This map is not the product of a Professional Land Survey. It was created by (Ed Vazquez) for general reference, informational, planning or guidance use, and is not a legally authoritative source as to location of natural or manmade features. Proper interpretation of this map may require the assistance of appropriate professional services. The Town of Hopkinton makes no warranty, express or implied, related to the spatial accuracy, reliability, completeness, or currentness of this map.



RIGIS
 Ed Vazquez
 GIS Data\2016-Comp-plan
 Date Created: 5/8/2017





www.CommunityResilienceBuilding.org